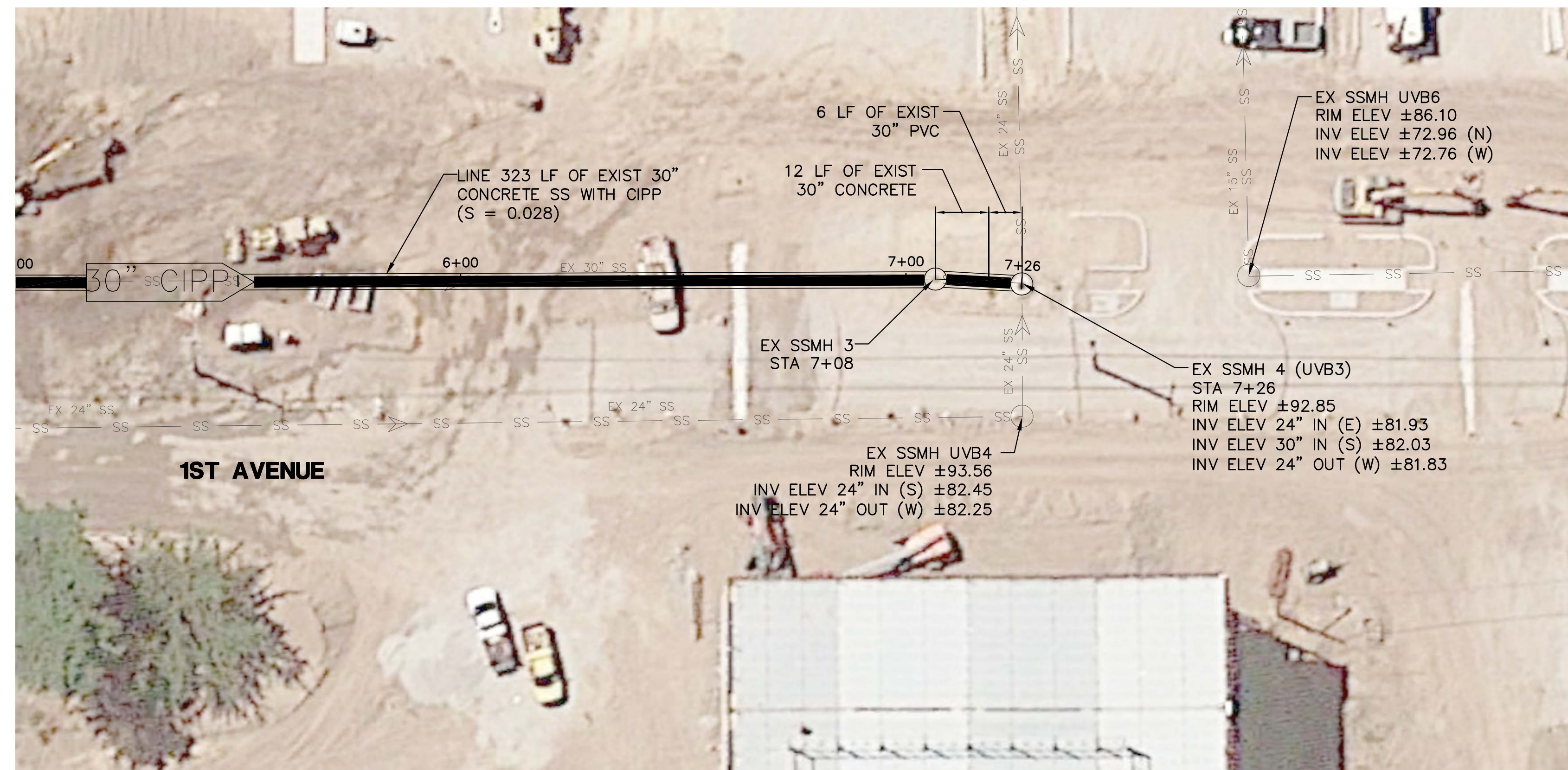
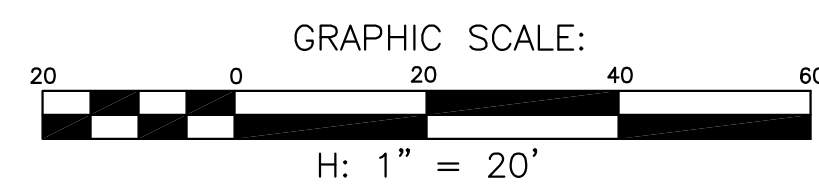


MATCHLINE - STA 5+00  
SEE BOTTOM



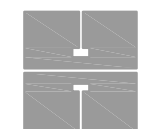
MATCHLINE - STA 5+00  
SEE TOP

- NOTES:**
- 1) EXISTING CONCRETE PIPE LENGTHS, DIAMETER, RIM ELEVATION AND INVERT ELEVATIONS ARE ALL APPROXIMATE AND MUST BE VERIFIED BY THE CONTRACTOR PRIOR TO ORDERING THE CIPP LINER
  - 2) CLEAN PIPE AND REMOVE ALL DEBRIS PRIOR TO PERFORMING THE PRE CONSTRUCTION CCTV. ENSURE THAT THE CLEANING AND DEBRIS REMOVAL DOES NOT FURTHER DEGRADE THE PIPE CONDITION.
  - 3) PROVIDE ACCESS TO LINER IN SSMH 2 AND 3 BY CAREFULLY CUTTING THE TOP OF THE LINER AT THE BENCH ELEVATION



PLAN

FOR CITY USE ONLY



**Harris & Associates**  
1401 Willow Pass Rd., Ste. 500, Concord CA, 94520  
harris-assoc.com (925) 927-4900

SUBMITTED:	DATE	DESIGN	KC	HORIZ.	1"=20'
SUPERVISING CIVIL ENGINEER	R.C.E.	DRAWN	AP	VERT.	-
APPROVED:	DATE	CHECK	VP	BOOK	
MANAGER OF ENGINEERING	R.C.E.	AS BUILT		DATE	04/25/16

MARINA COAST WATER DISTRICT  
FIRST AVE SEWER REHAB

REVISION	MARK	DATE	DESCRIPTION	APPROVAL

PLAN FILE  
SHEET \_\_\_ OF \_\_\_