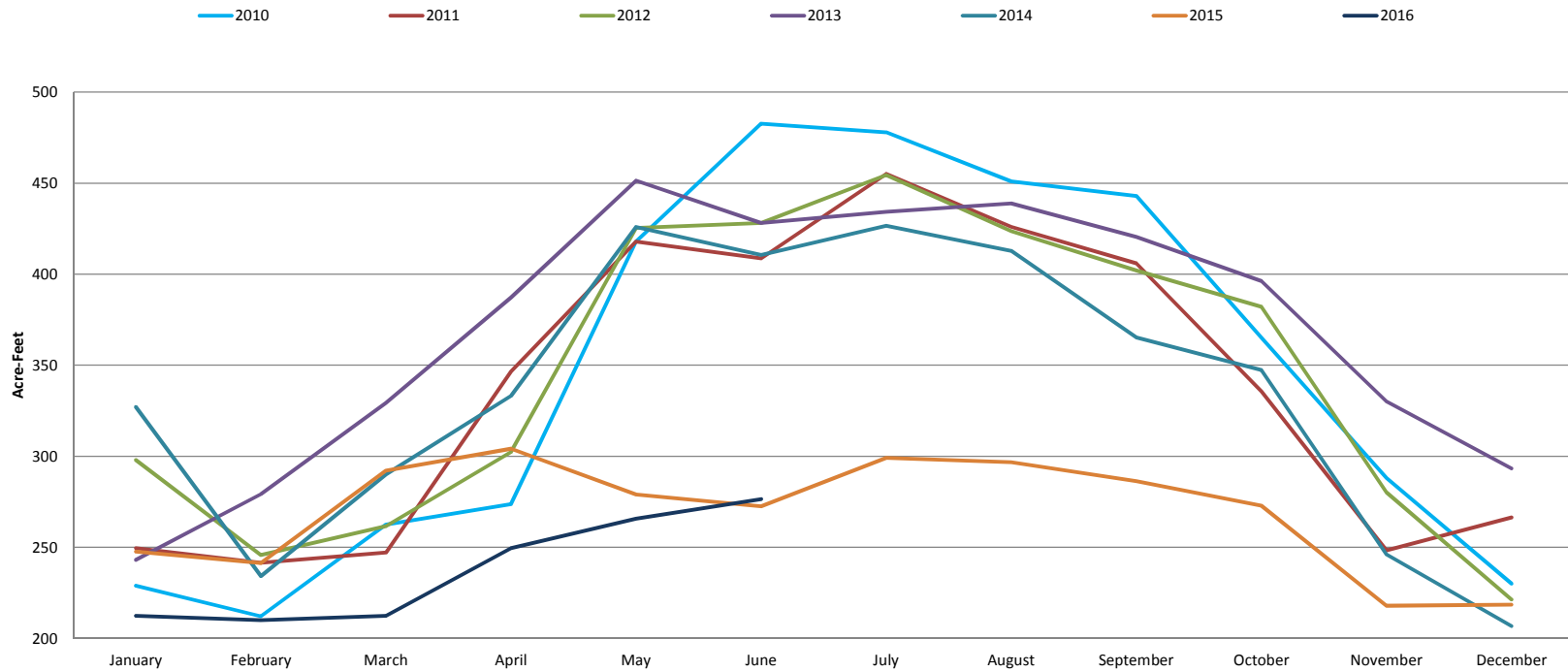


Production by Month (acre-feet)

	2008	2009	2010	2011	2012	2013	2014	2015	2016
January	250.00	339.10	228.90	249.50	297.99	243.06	327.14	247.66	212.37
February	234.00	218.80	212.10	241.52	245.82	279.08	234.16	241.34	209.91
March	295.00	277.40	262.40	247.05	261.68	329.29	290.01	292.16	212.37
April	355.00	349.20	273.70	346.48	302.29	387.29	333.28	304.13	249.50
May	461.00	379.30	418.00	417.98	425.35	451.43	425.96	278.96	265.77
June	415.00	385.50	482.70	408.78	428.11	428.11	410.62	272.52	276.51
July	415.00	415.80	478.00	455.12	454.50	434.25	426.58	299.06	
August	410.00	395.30	451.00	425.96	423.48	438.85	412.77	296.76	
September	395.00	371.00	443.00	406.01	402.02	420.44	365.20	286.33	
October	369.00	326.80	365.00	335.59	382.08	396.27	347.40	272.82	
November	303.00	308.70	288.00	248.27	280.19	330.21	246.12	217.89	
December	267.00	270.70	230.00	266.38	221.32	293.26	206.69	218.41	
TOTAL	4169.00	4037.60	4132.80	4048.64	4124.83	4431.54	4025.93	3228.04	1426.43

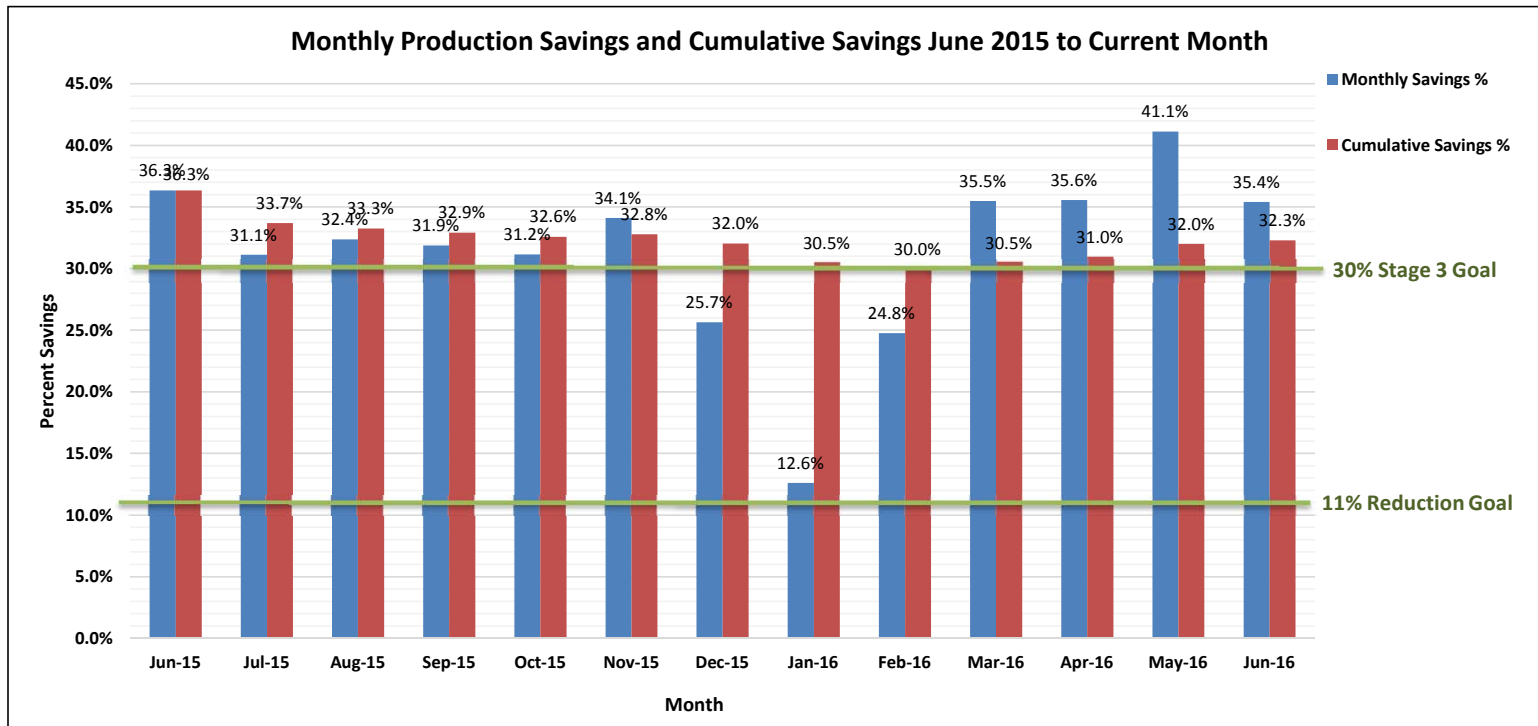
* Production data taken from Marina Coast Water District Well Production Summaries

2010-2016 Total Production by Month (Acre-Feet)



Monthly Production Savings and Cumulative Savings June 2015 to Current Month

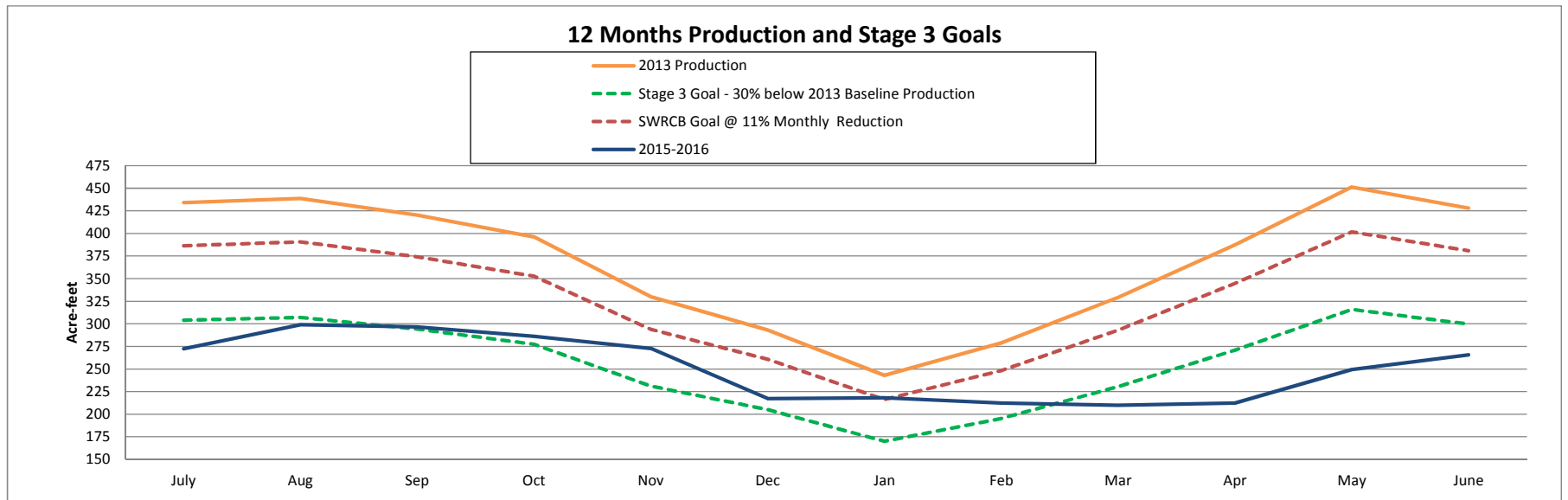
Current Month	Water Prod (AF) 2013	Recent Water Prod (AF)	Monthly Savings (AF)	Monthly Savings %	Cumulative Savings %
Jun-15	428.11	272.52	155.59	36.3%	36.3%
Jul-15	434.25	299.06	135.19	31.1%	33.7%
Aug-15	438.85	296.76	142.09	32.4%	33.3%
Sep-15	420.44	286.33	134.11	31.9%	32.9%
Oct-15	396.27	272.82	123.45	31.2%	32.6%
Nov-15	330.21	217.52	112.69	34.1%	32.8%
Dec-15	293.26	218.00	75.26	25.7%	32.0%
Jan-16	243.06	212.37	30.69	12.6%	30.5%
Feb-16	279.08	209.91	69.17	24.8%	30.0%
Mar-16	329.29	212.37	116.92	35.5%	30.5%
Apr-16	387.29	249.50	137.79	35.6%	31.0%
May-16	451.43	265.77	185.66	41.1%	32.0%
Jun-16	428.11	277	152	35.4%	32.3%
Jul-16	434.25				
Total	5294	2747	1233	-	31%



Monthly Production Reduction Performance

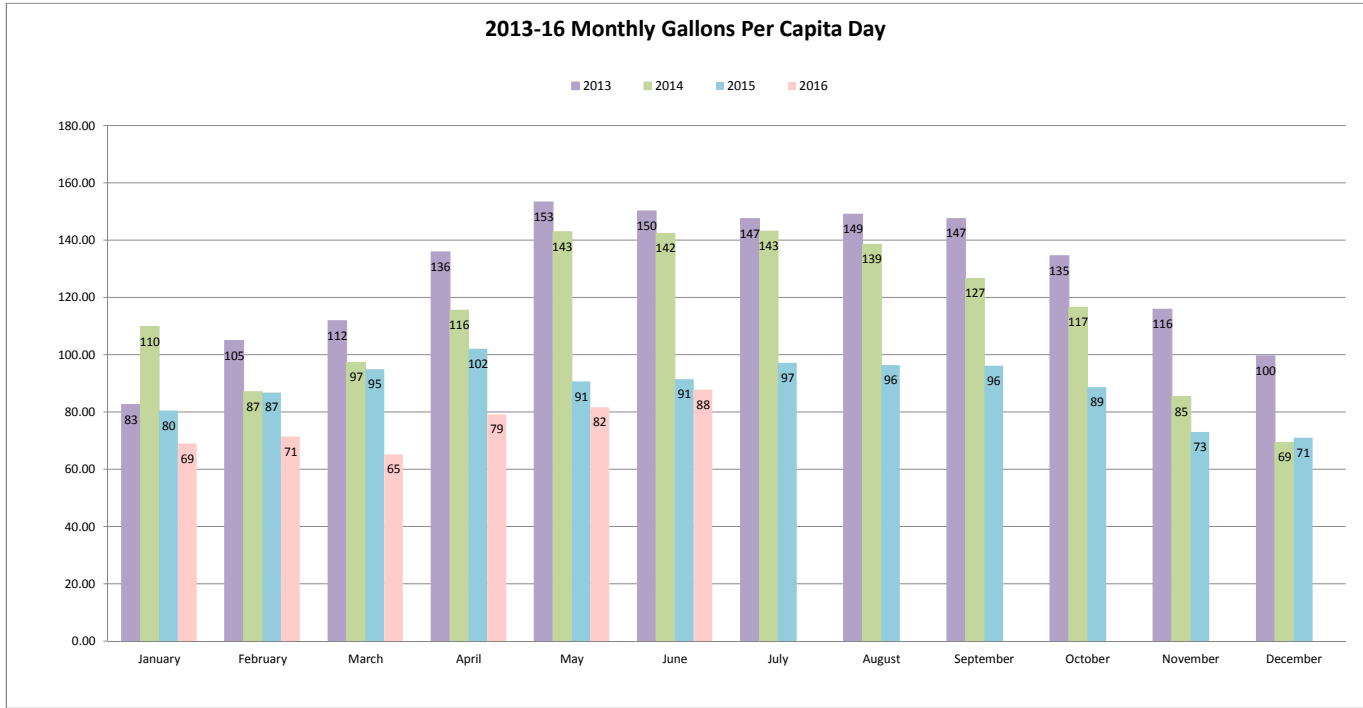
	Acre-Feet								
	*2013 Production	Stage Three 30% Savings Goal	SWRCB Goal @ 11% Monthly Reduction	*2014 Production	2014 Performance Beyond 30% Goal Below 30% Goal	*2015 Production	2015 Performance Beyond 30% Goal Below 30% Goal	*2016 Production	2016 Performance Beyond 30% Goal Below 30% Goal
Jan	243.06	170.14	216.32	327.14	157.00	247.66	77.52	212.37	42.23
Feb	279.08	195.36	248.38	234.16	38.80	241.34	45.98	209.91	14.55
Mar	329.29	230.50	293.07	290.01	59.51	292.16	61.66	212.37	-18.13
Apr	387.29	271.10	344.69	333.28	62.18	304.13	33.03	249.5	-21.60
May	451.43	316.00	401.77	425.96	109.96	278.96	-37.04	265.77	-50.23
June	428.11	299.68	381.02	410.62	110.94	272.52	-27.16	276.51	-23.17
July	434.25	303.98	386.48	426.58	122.61	299.06	-4.91		
Aug	438.85	307.20	390.58	412.77	105.58	296.76	-10.44		
Sep	420.44	294.31	374.19	365.2	70.89	286.33	-7.98		
Oct	396.27	277.39	352.68	347.4	70.01	272.82	-4.57		
Nov	330.21	231.15	293.89	246.12	14.97	217.52	-13.63		
Dec	293.26	205.28	261.00	206.69	1.41	218.41	13.13		

* Production data taken from Marina Coast Water District Well Production Summaries



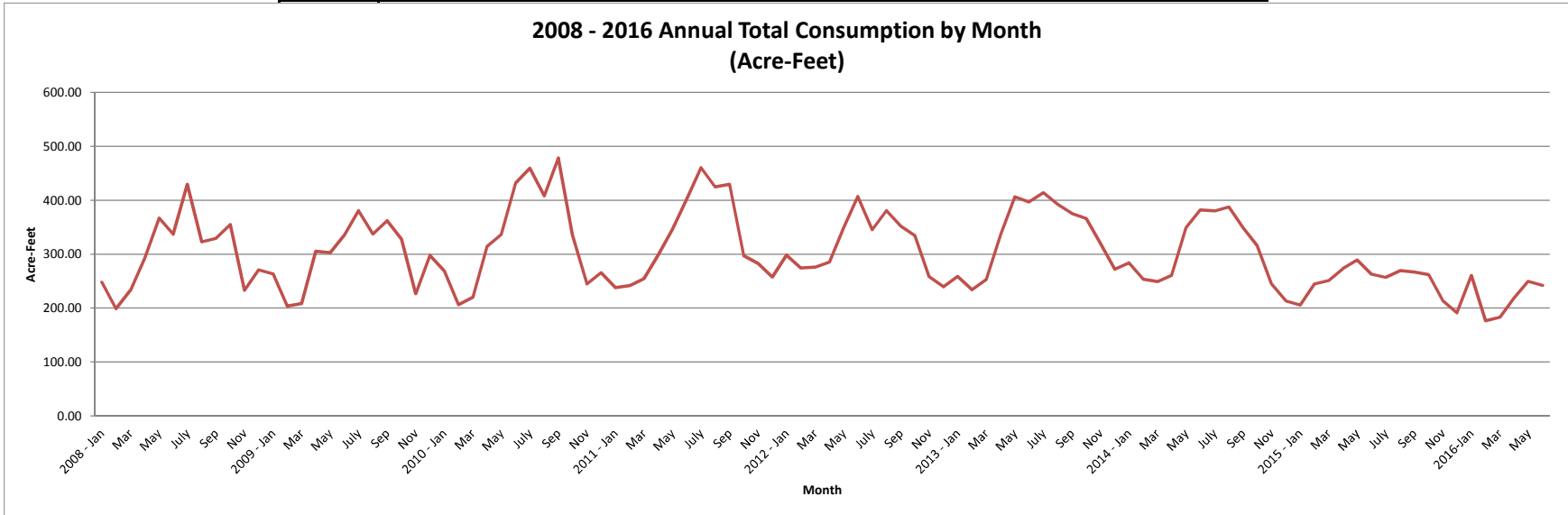
2016					
# of days		Production (AF)	Production (Gallons)	Population	GPCD
31	January	212.37	69,200,976.87	32,375	68.95
28	February	209.91	68,399,383.41	34,235	71.35
31	March	212.37	69,200,976.87	34,235	65.20
30	April	249.5	81,299,824.50	34,235	79.16
31	May	265.77	86,601,420.27	34,235	81.60
30	June	276.51	90,101,060.01	34,235	87.73
31	July			34,235	
31	August			34,235	
30	September			34,235	
31	October			34,235	
30	November			34,235	
31	December			34,235	
365	2016 Year	1426.43	464,803,641.93	34,516	68.50

District Baseline and GPCD Targets (Gross Production)		
Description	Year	Amount (gpcd)
Baseline GPCD	2008	133
Maximum Allowable Target	2020	126
Interim GPCD Target	2015	125
2020 GPCD Target	2020	117
2014 GPCD	2014	115
2015 GPCD	2015	89



Annual Total Estimated Consumption by Month (Acre-Feet)

	2008	2009	2010	2011	2012	2013	2014	2015	2016
January	247.67	263.53	268.67	237.52	297.91	258.43	283.58	205.30	259.91
February	198.52	203.24	205.89	241.48	274.32	233.82	253.28	244.47	176.27
March	232.79	208.08	220.13	254.20	275.92	252.54	248.67	250.91	182.79
April	292.16	305.05	314.48	298.94	285.28	336.00	260.80	273.19	218.77
May	366.50	302.44	336.18	346.00	349.02	406.24	348.87	288.98	249.56
June	336.62	335.01	432.19	402.48	406.93	396.64	381.85	263.02	242.17
July	429.20	380.63	459.50	460.59	345.06	413.76	380.15	256.84	
August	322.95	337.48	407.87	424.59	380.61	392.26	387.74	269.34	
September	329.35	361.62	478.48	429.27	351.55	375.33	348.87	266.76	
October	355.18	327.83	335.42	297.07	334.00	366.01	314.94	261.86	
November	232.73	226.62	244.55	282.55	257.89	319.91	244.46	213.44	
December	270.89	297.50	265.62	257.27	239.06	272.18	213.03	190.92	
Total	3614.56	3549.05	3968.99	3931.94	3797.56	4023.12	3666.23	2973.68	



**Metered + Unmetered Consumption (Acre-Feet)
2013 - 2016**

Metered Consumption calculated from spreadsheet 2013-16 ConsumptionByCategory by adding all metered categories together per month (single family metered consumption+ commercial/institutional metered consumption +multi-family metered consumption +landscape irrigation metered consumption)

Metered Consumption				
	2013	2014	2015	2016
Jan	227.01	260.74	172.66	239.08
Feb	202.40	230.44	223.34	155.44
Mar	221.12	225.83	229.77	160.41
Apr	304.58	237.96	252.06	196.38
May	374.82	326.03	267.95	227.18
June	365.23	359.01	242.02	219.79
July	382.35	357.31	235.70	
Aug	360.84	364.90	248.20	
Sep	343.91	326.03	245.63	
Oct	334.59	292.10	240.72	
Nov	288.49	221.62	192.62	
Dec	240.77	190.19	170.09	
TOTAL	3646.12	3392.15	2720.77	

Estimated Unmetered Consumption				
	2013	2014	2015	2016
Jan	31.42	22.84	21.28	20.83
Feb	31.42	22.84	21.14	20.83
Mar	31.42	22.84	21.14	22.38
Apr	31.42	22.84	21.14	22.38
May	31.42	22.84	21.02	22.38
June	31.42	22.84	21.00	22.38
July	31.42	22.84	21.14	
Aug	31.42	22.84	21.14	
Sep	31.42	22.84	21.14	
Oct	31.42	22.84	21.14	
Nov	31.42	22.84	20.83	
Dec	31.42	22.84	20.83	
TOTAL	377.00	274.12	252.91	

Total Consumption				
	2013	2014	2015	2016
Jan	258.43	283.58	193.94	259.91
Feb	233.82	253.28	244.47	176.27
Mar	252.54	248.67	250.91	182.79
Apr	336.00	260.80	273.19	218.76
May	406.24	348.87	288.98	249.56
June	396.64	381.85	263.02	242.17
July	413.76	380.15	256.84	
Aug	392.26	387.74	269.34	
Sep	375.33	348.87	266.76	
Oct	366.01	314.94	261.86	
Nov	319.91	244.46	213.44	
Dec	272.18	213.03	190.92	
TOTAL	4023.12	3666.2693	2973.68	

