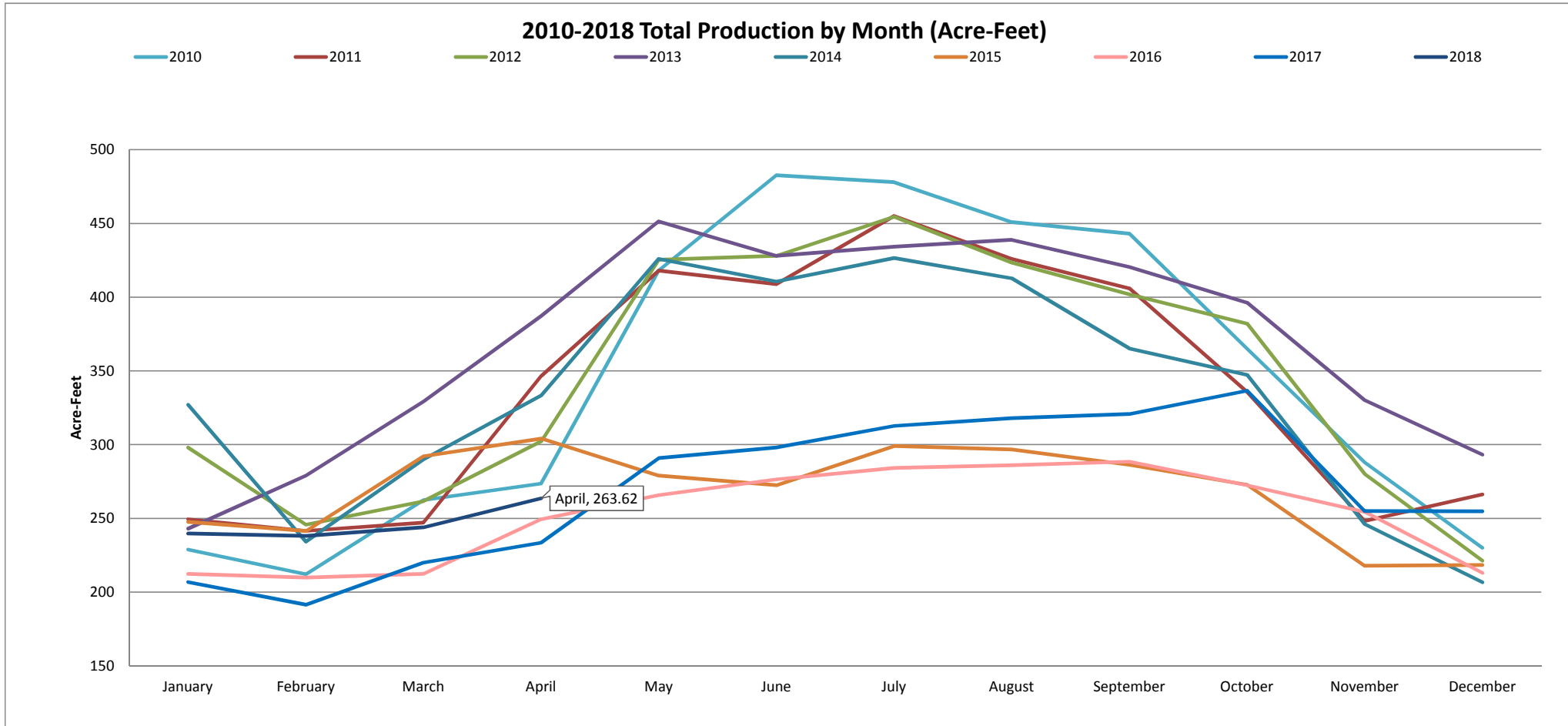


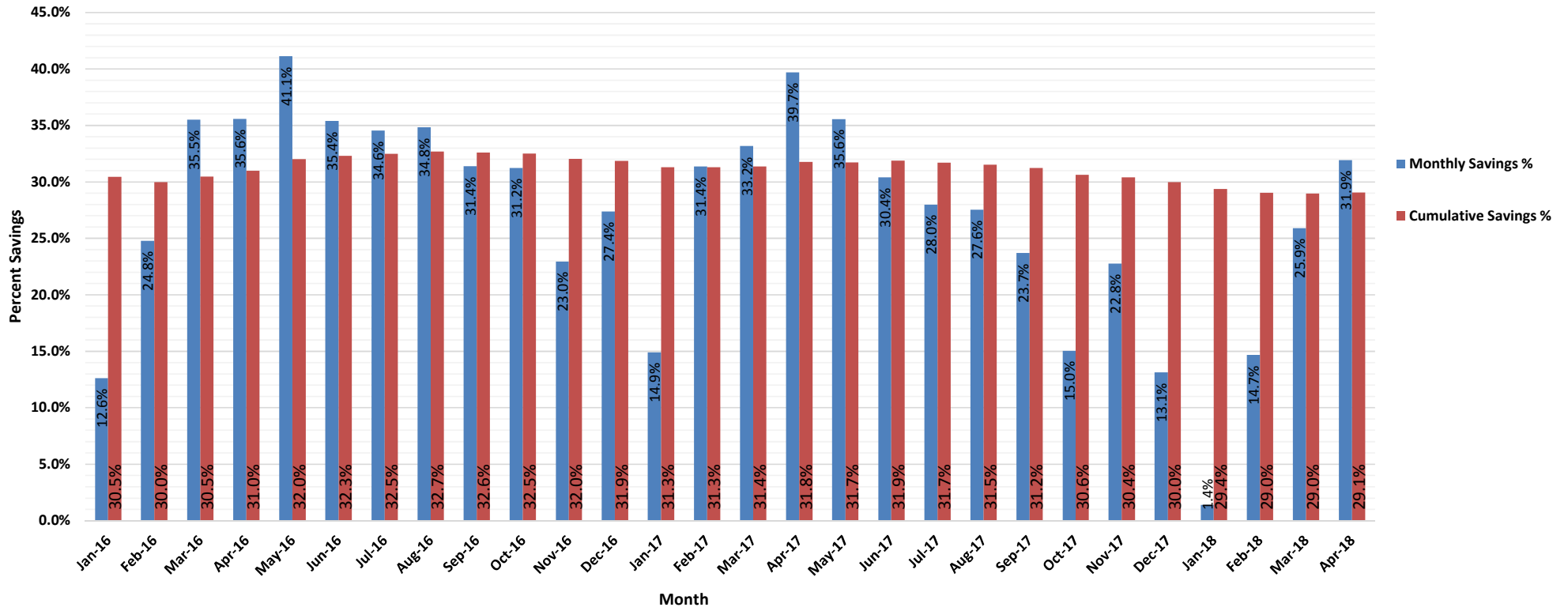
Production by Month (acre-feet)

	2008	2009	2010	2011	2012	2013	2014	2015	2016	2017	2018
January	250.00	339.10	228.90	249.50	297.99	243.06	327.14	247.66	212.37	206.84	239.68
February	234.00	218.80	212.10	241.52	245.82	279.08	234.16	241.34	209.91	191.50	238.15
March	295.00	277.40	262.40	247.05	261.68	329.29	290.01	292.16	212.37	220.04	243.98
April	355.00	349.20	273.70	346.48	302.29	387.29	333.28	304.13	249.50	233.54	263.62
May	461.00	379.30	418.00	417.98	425.35	451.43	425.96	278.96	265.77	290.93	
June	415.00	385.50	482.70	408.78	428.11	428.11	410.62	272.52	276.51	297.99	
July	415.00	415.80	478.00	455.12	454.50	434.25	426.58	299.06	284.18	312.72	
August	410.00	395.30	451.00	425.96	423.48	438.85	412.77	296.76	286.02	317.94	
September	395.00	371.00	443.00	406.01	402.02	420.44	365.20	286.33	288.48	320.70	
October	369.00	326.80	365.00	335.59	382.08	396.27	347.40	272.82	272.52	336.66	
November	303.00	308.70	288.00	248.27	280.19	330.21	246.12	217.89	254.41	255.02	
December	267.00	270.70	230.00	266.38	221.32	293.26	206.69	218.41	212.98	254.72	
TOTAL	4169.00	4037.60	4132.80	4048.64	4124.83	4431.54	4025.93	3228.04	3025.02	3238.60	

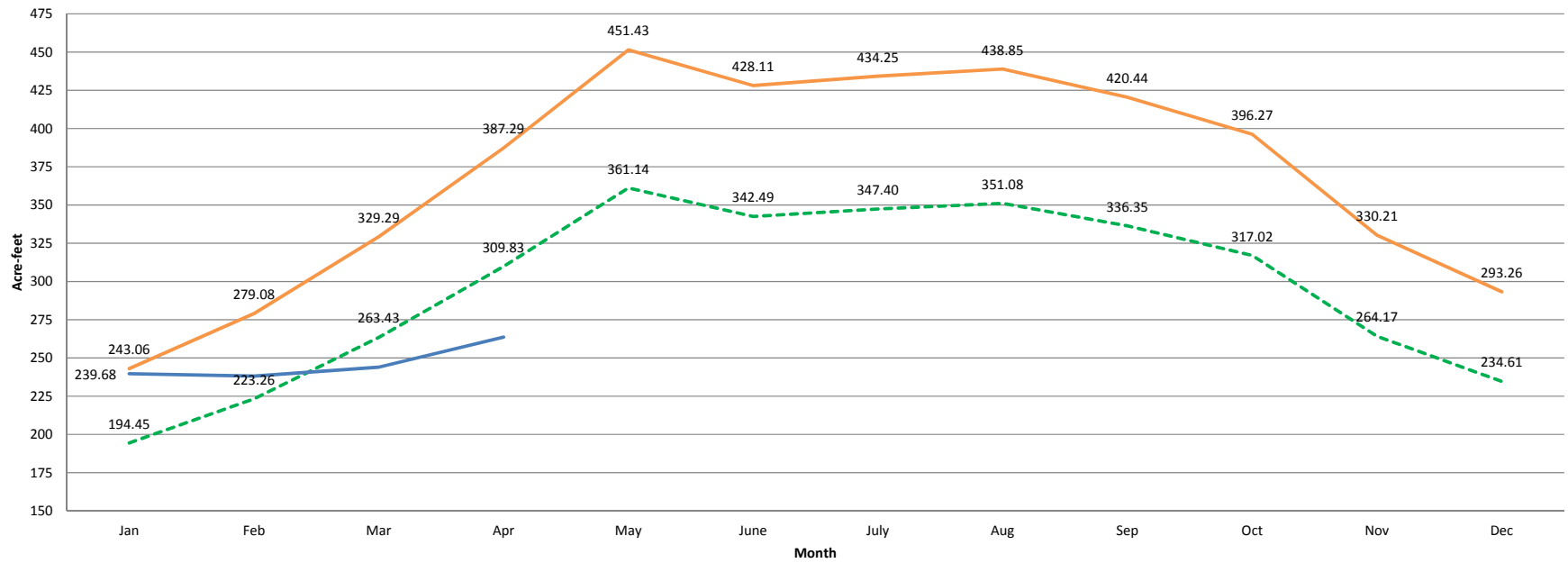
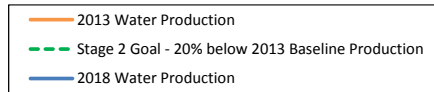
* Production data taken from Marina Coast Water District Well Production Summaries



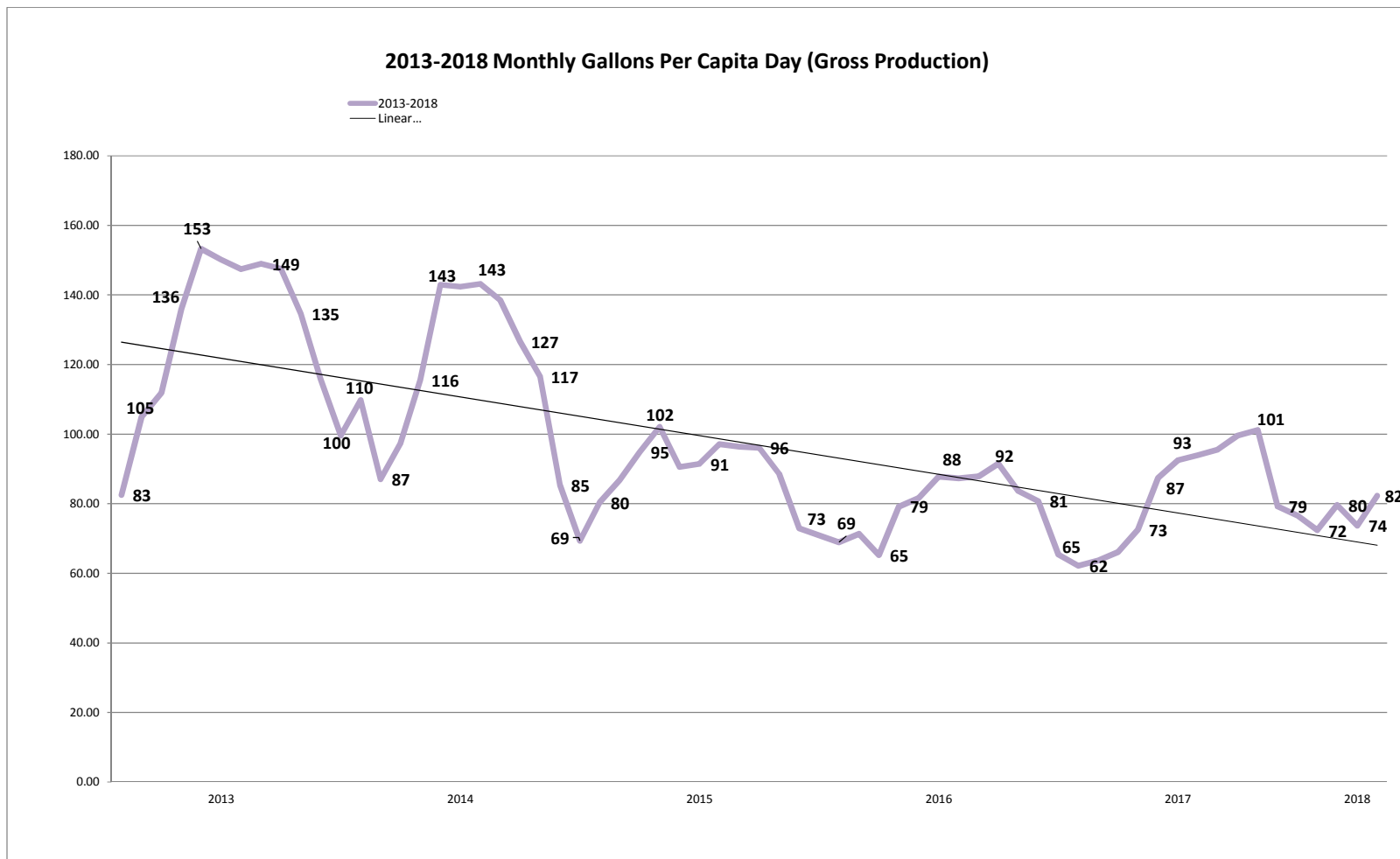
Monthly Production Savings and Cumulative Savings Compared to 2013 Only January 2016 to Current Month Shown



2018 Production VS. Water Production Reduction Goals

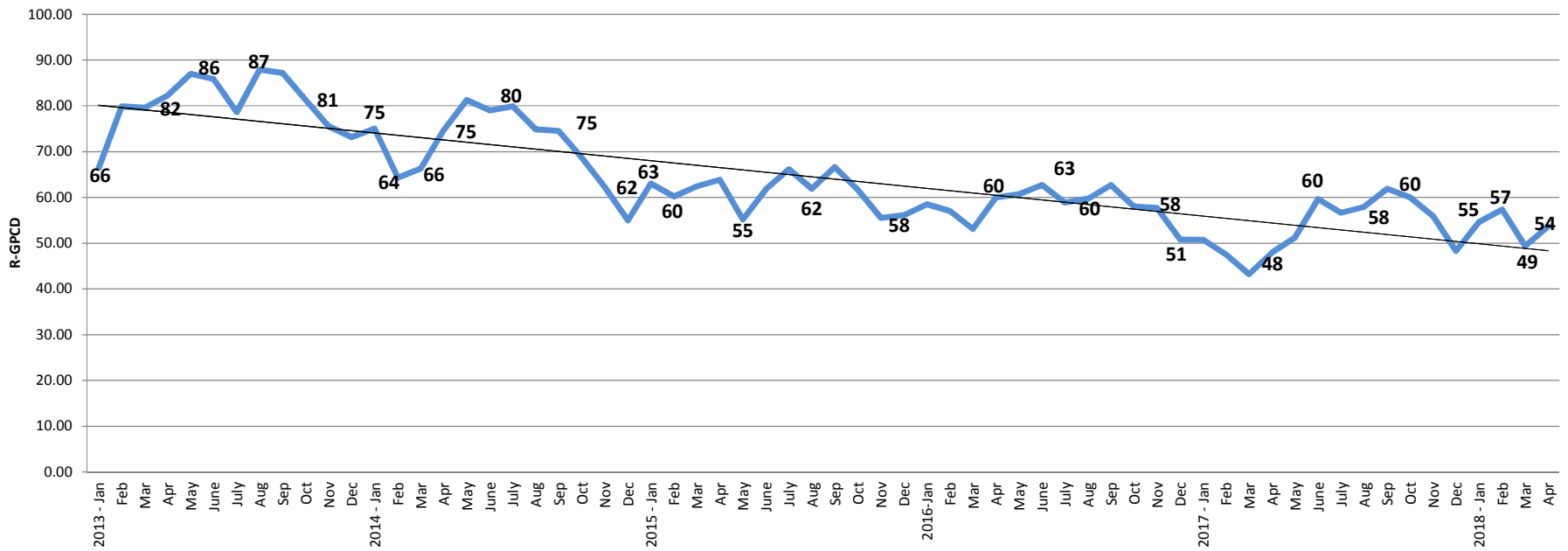


District Baseline and GPCD Targets (Gross Production)		
Description	Year	Amount (gpcd)
Baseline GPCD	2008	133
Maximum Allowable Target	2020	126
Interim GPCD Target	2015	125
2020 GPCD Target	2020	117
2014 GPCD	2014	115
2015 GPCD	2015	89
2016 GPCD	2016	79
2017 GPCD	2017	83
2018 GPCD Year To Date	2018	77

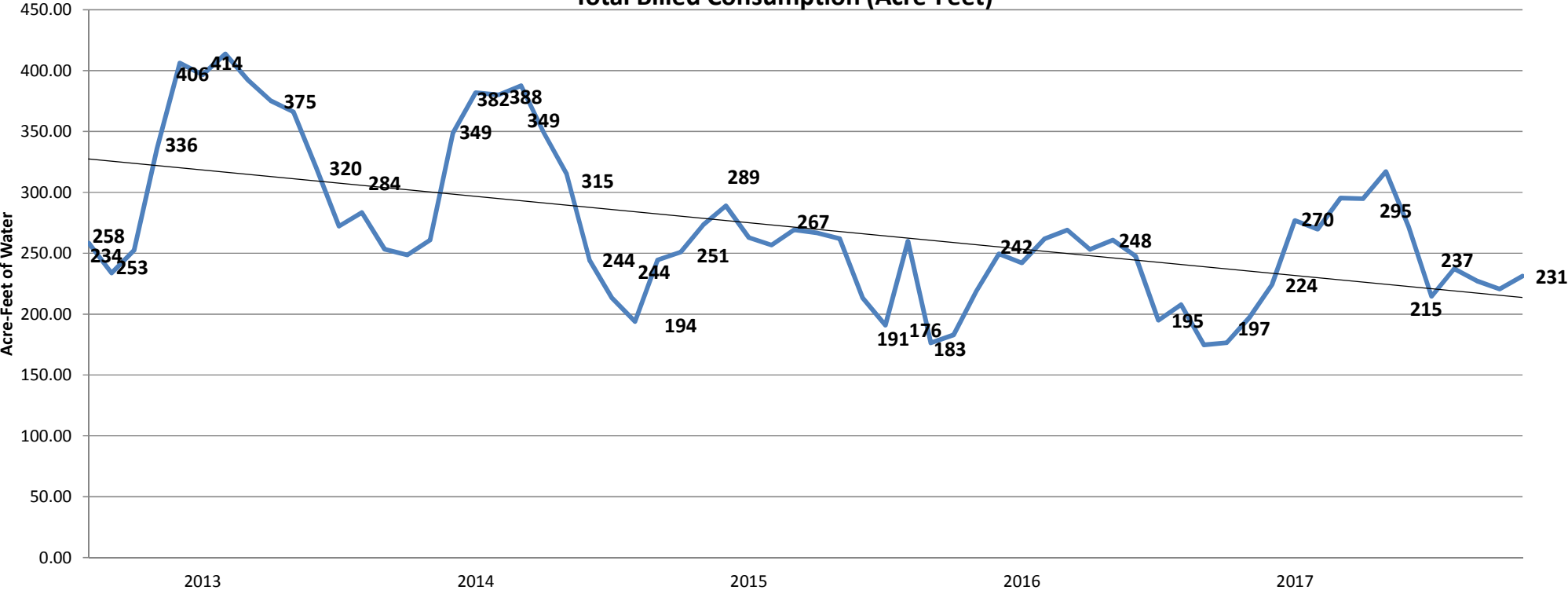


2013-2018 Residential Gallons-per-Capita-Day

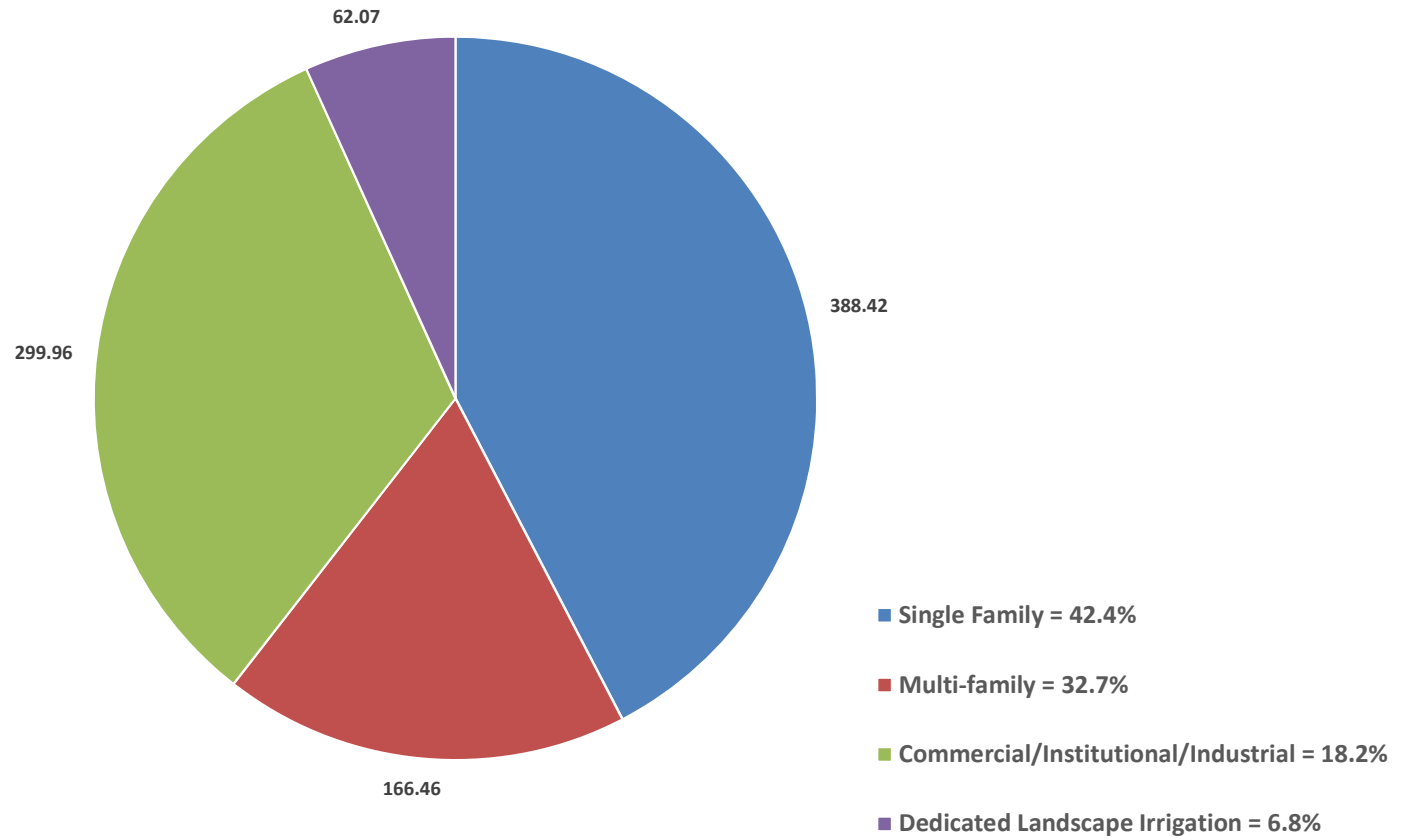
2013 - 2018



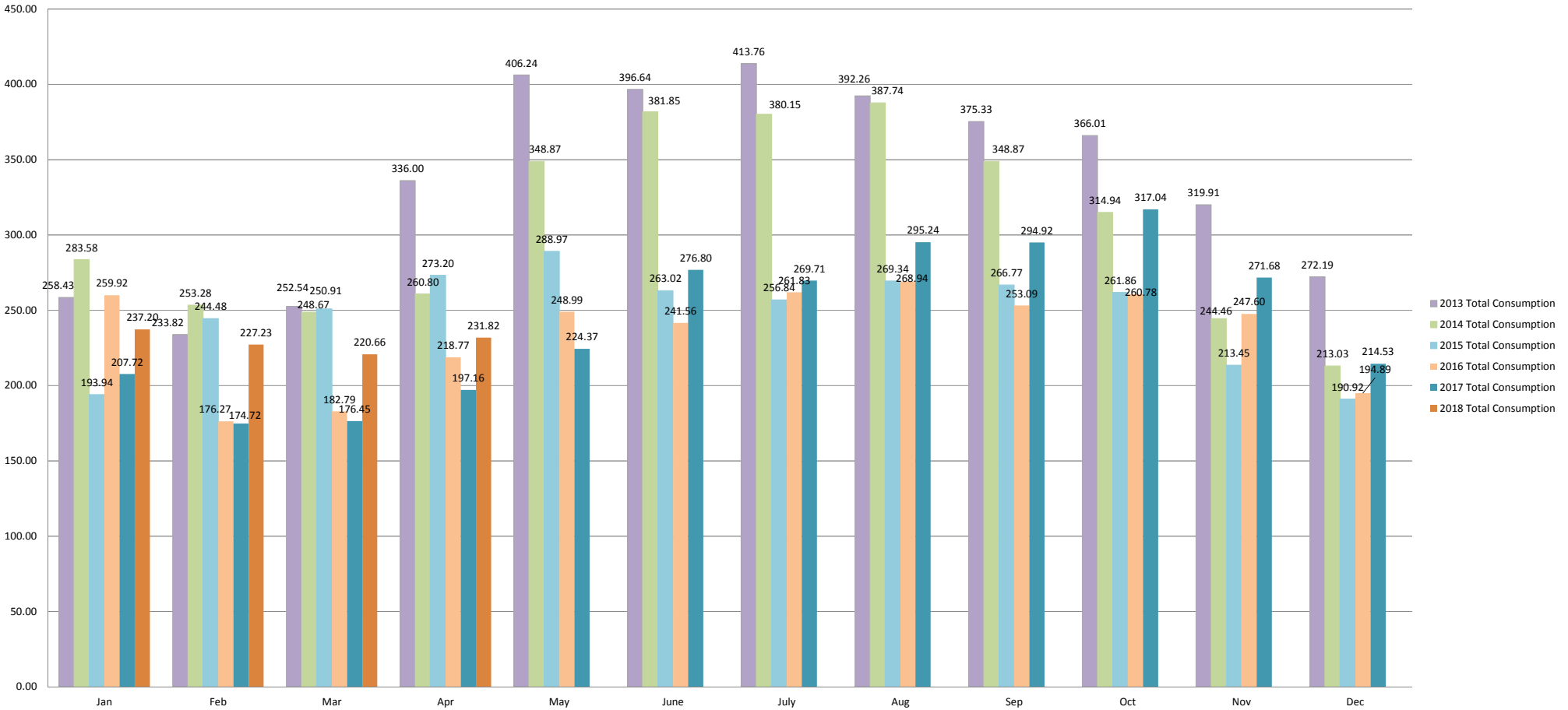
2013 - 2018 Total Billed Consumption (Acre-Feet)



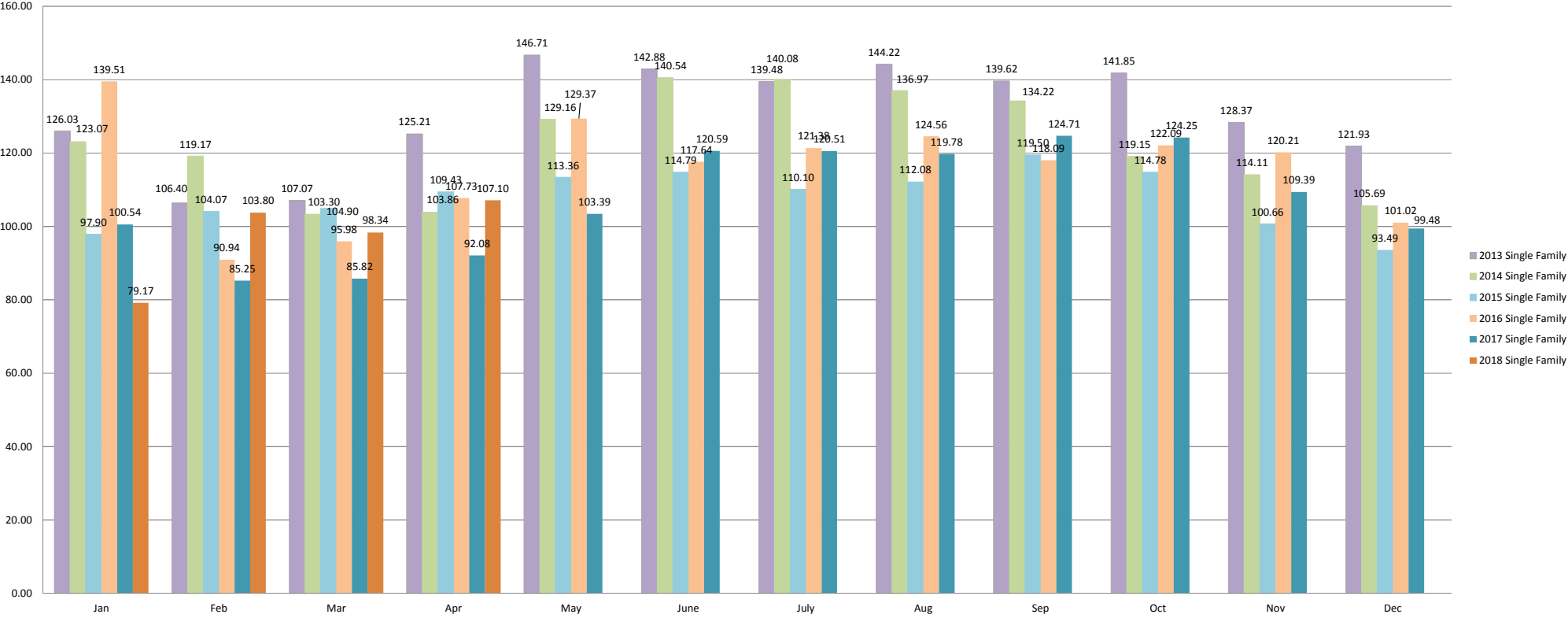
Total Billed Consumption 2018 Year-To-Date (Acre-Feet)



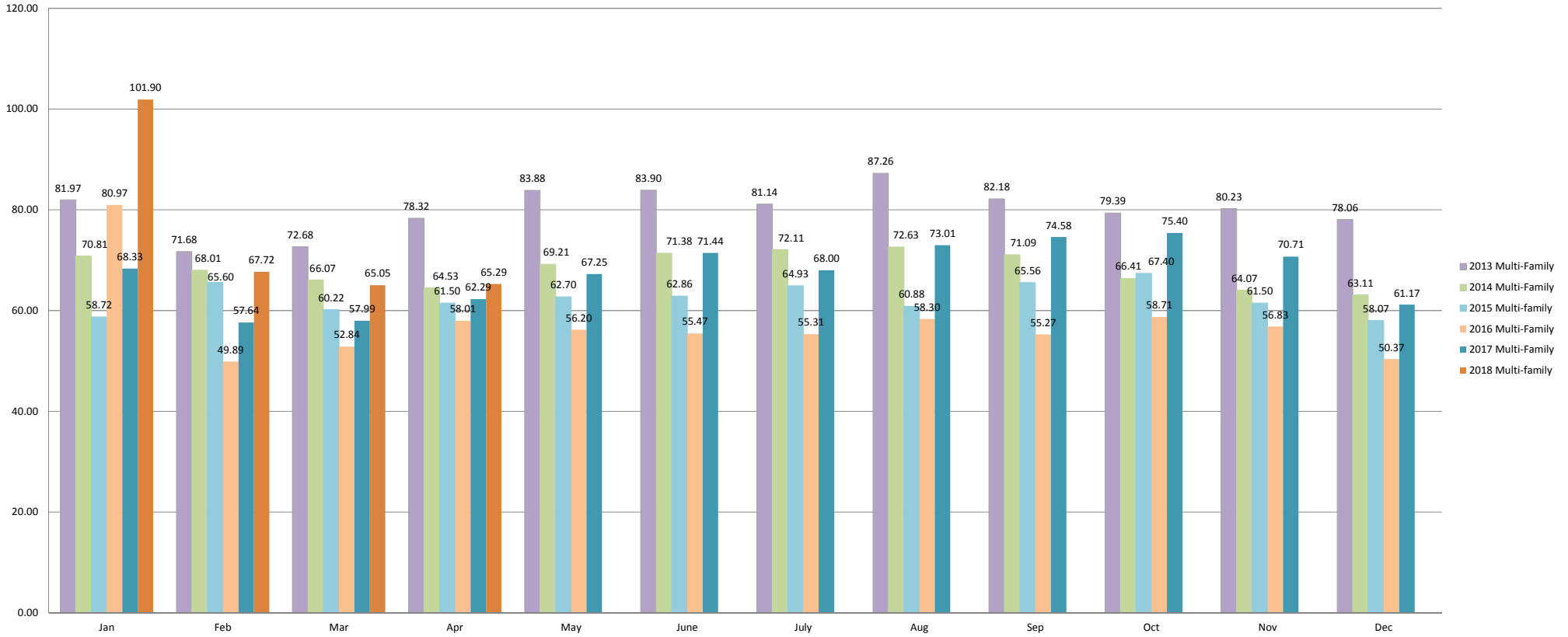
2013-2018 Total Consumption by Month (Acre-Feet)



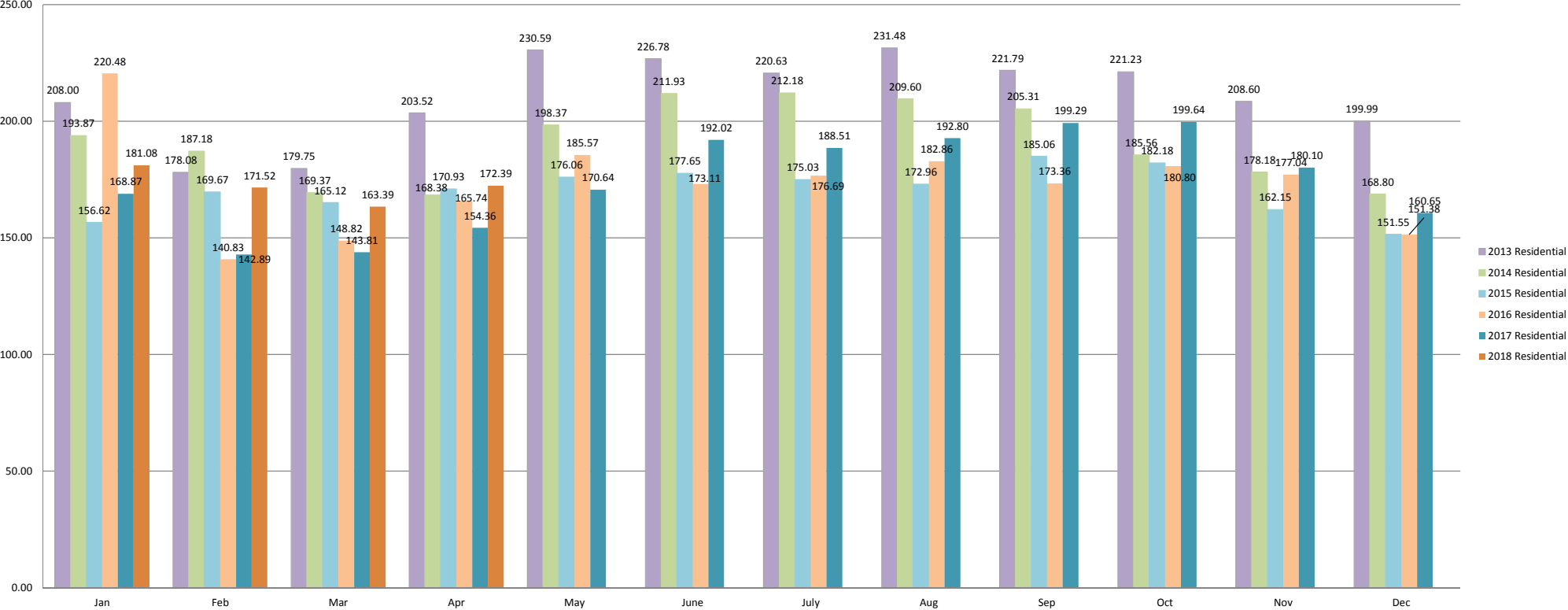
2013-2018 Single Family Consumption by Month (Acre-Feet)



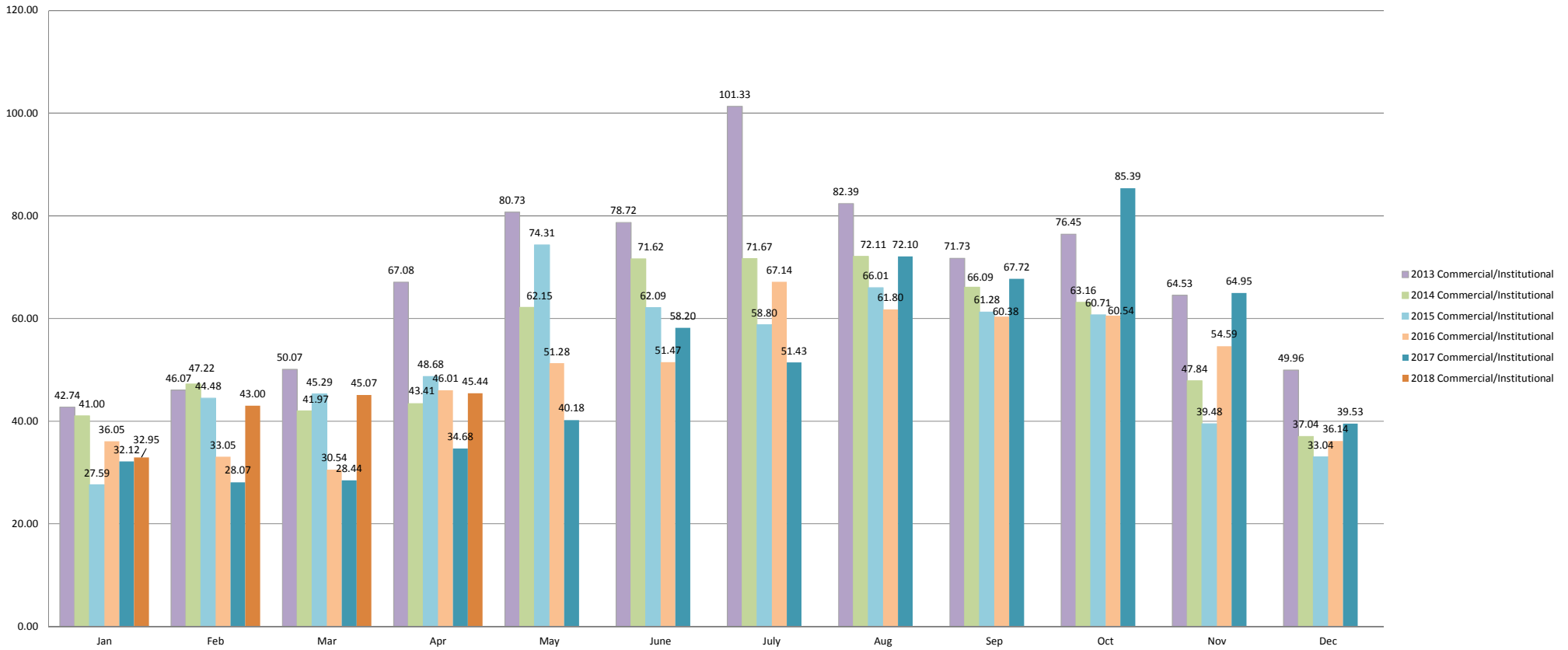
2013-2018 Multi-Family Total Consumption by Month (Acre-Feet)



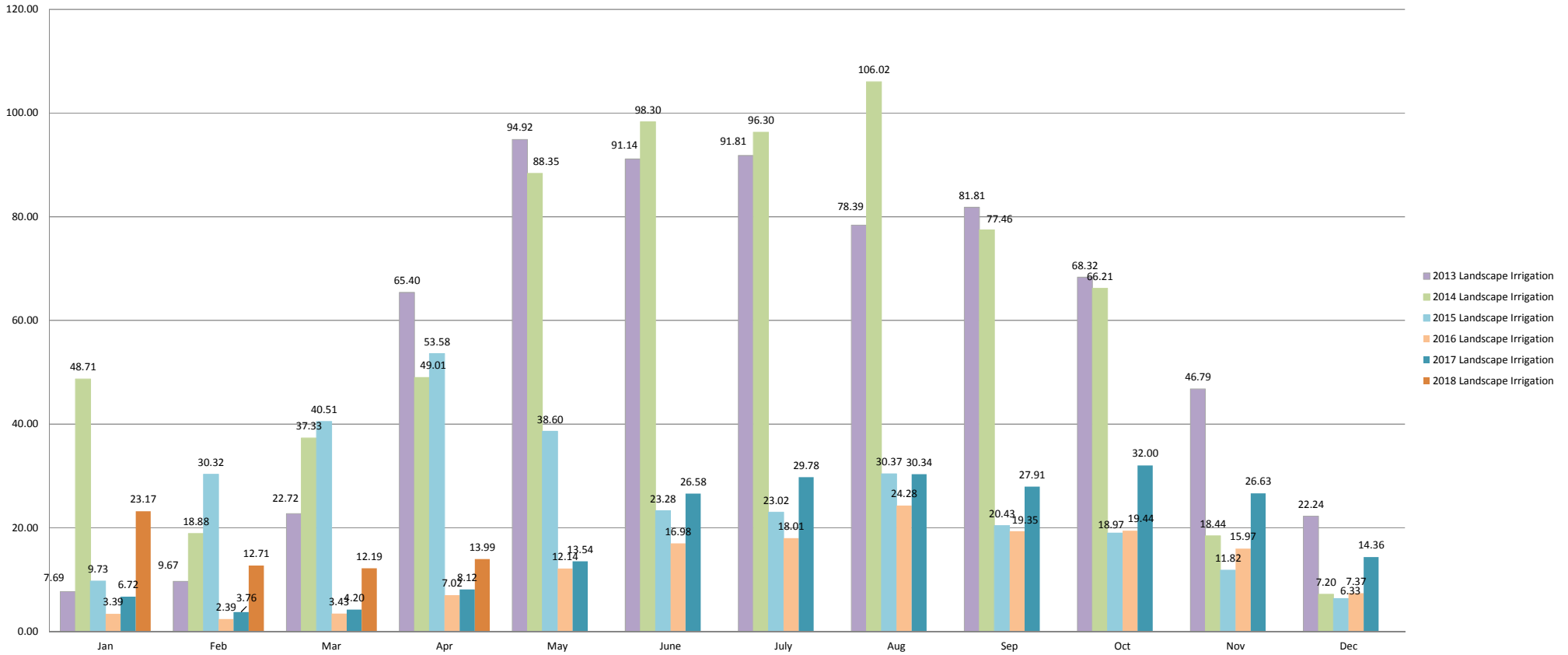
**2013-2018 Residential Total Consumption by Month (Acre-Feet)
(Single-Family and Multi-family Combined)**



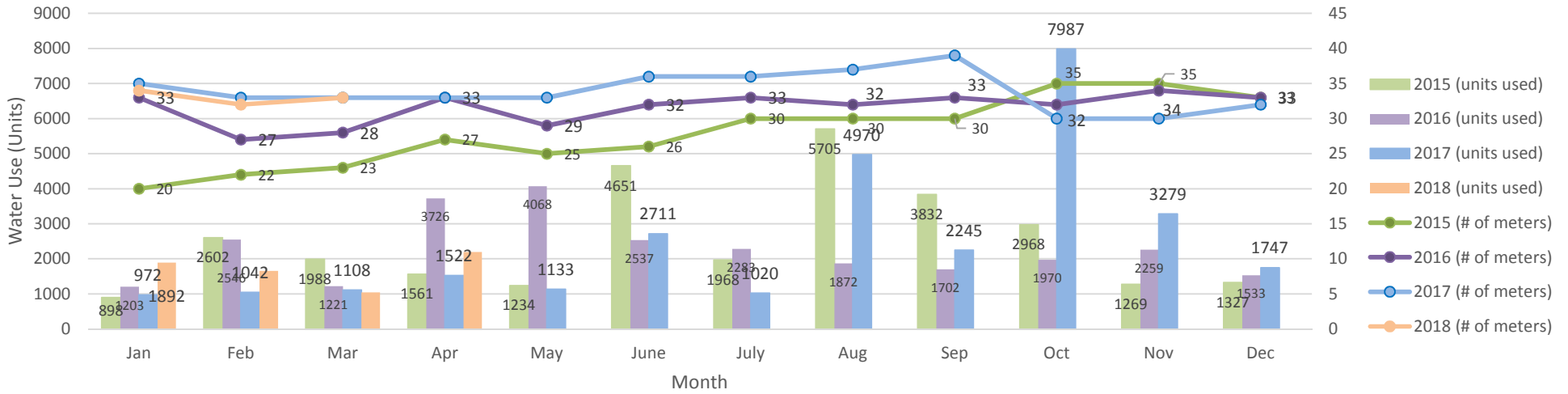
2013-2018 Commercial/Institutional Consumption by Month (Acre-Feet)



2013-2018 Landscape Irrigation Consumption by Month (Acre-Feet)



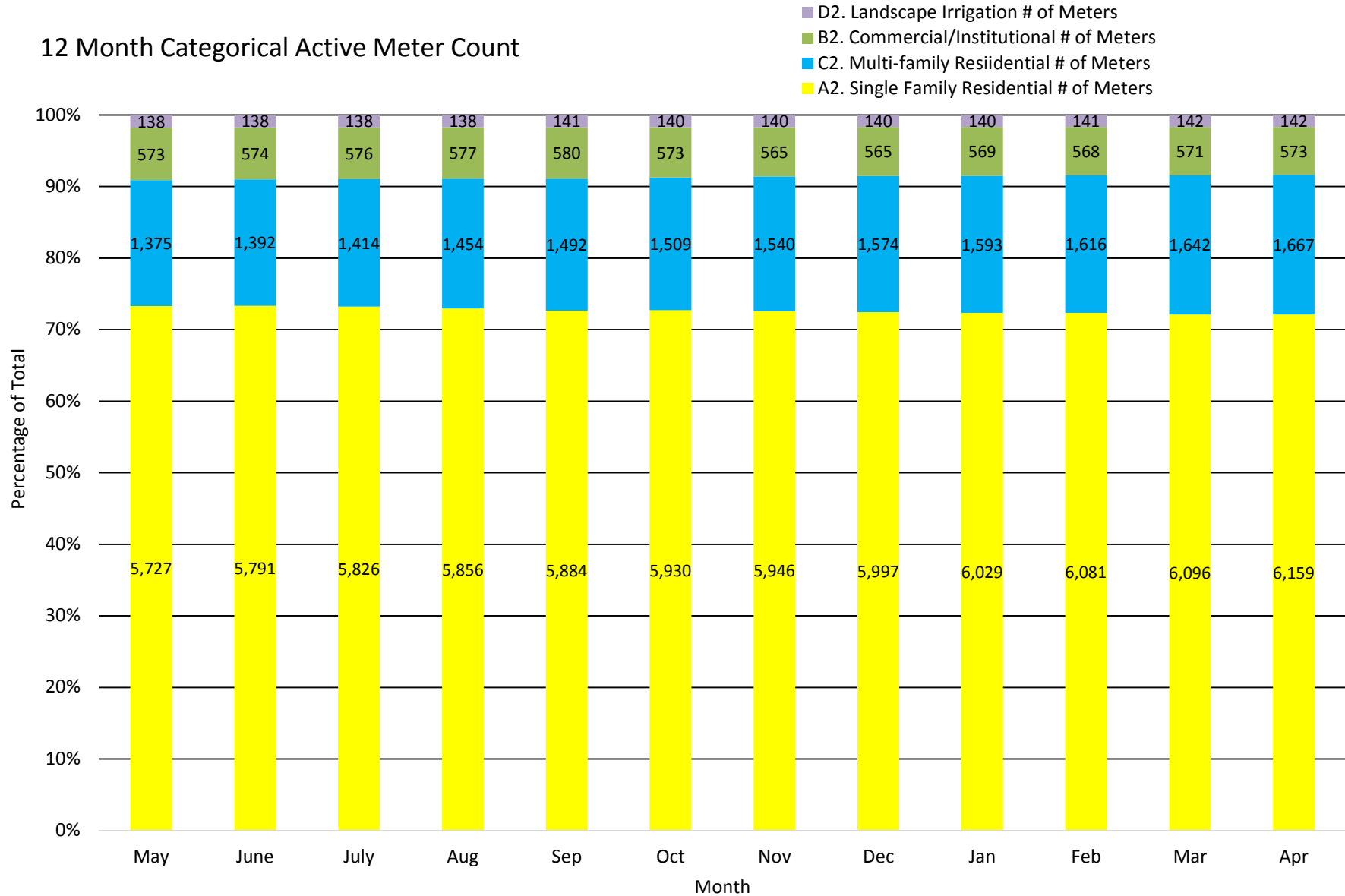
2015-2018 Total District Temporary Hydrant Meter Water Use in Units vs. # of Meters



Temporary Meter Water Use: Percentage of Total Consumption

Past 12 Months												
	May	June	July	Aug	Sep	Oct	Nov	Dec	Jan	Feb	Mar	Apr
Consumption (HCF)	97,742	120,581	117,495	128,613	128,475	138,110	118,352	93,460	103,340	98,988	96,126	100,718
Temporary Hydrant Use (HCF)	1,133	2,711	1,020	4,970	2,245	7,987	3,279	1,747	1,892	1,658	1,045	2193
Percentage	1.2%	2.2%	0.9%	3.9%	1.7%	5.8%	2.8%	1.9%	1.8%	1.7%	1.1%	2.2%

12 Month Categorical Active Meter Count



2015 - 2018 Active Meter Count vs. Metered Consumption in Acre-Feet

