

ADDENDUM NO. 5

PROJECT: A1/A2 Reservoirs and B/C Booster Pump Station Project

CIP NO.: GW-0112

FROM: District Engineer
Marina Coast Water District
11 Reservation Road
Marina, CA 93933

ISSUED: February 11, 2021

TO: **Prospective Bidders**

This Addendum forms a part of the Bidding Documents and will be incorporated into Contract Documents. Insofar as the Specifications or Drawings or both are inconsistent, this Addendum governs. Acknowledge receipt of the Addendum by inserting its number in Document 00410 – Bid Form. **FAILURE TO DO SO WILL SUBJECT BID TO DISQUALIFICATION.**

PART 1 – BIDDER INFORMATION ITEMS

- A. The Bid Date remains unchanged, 2:00 on February 24, 2021. The bid location is 920 Second Avenue, Suite A, Marina, CA 93933.
- B. Bid Item 20, Replace 300 KW Generator at Intermediate Reservoir, is changed to Alternate Bid Item A3.
- C. Alternate Bid Item A4, 24-inch PVC Sanitary Sewer, is added as an alternate to the HDPE sanitary sewer pipe material.

PART 2 - CHANGES TO PROJECT MANUAL

- A. Document 00 41 00, Bid Form, is reissued with changes (attached).
- B. Section 01 20 00, Measurement and Payment, is reissued with changes (attached)
- C. Section 43 24 10, Vertical Turbine Pumps, add the following paragraph 2.04.H:
H. Motor enclosure shall be Open Drip Proof (ODP) for indoor installation.

PART 3 - CHANGES TO DRAWINGS

- A. Sheet C-112 was missing from the plan set. It is attached.

PART 4 – QUESTIONS RECEIVED

- Q1 What type of enclosure is required for the pump motors, WP-1 or TEFC?
A1 Enclosures shall be Open Drip Proof for indoor installation.
- Q2 What is the required thickness of treated sand under the water tanks?

A2 Provide a minimum 3-inch layer of treated sand, as stated in Section 33 16 00, paragraph 3.01.A.

Q3 Are there any domestic material requirements on this project?

A3 No, there are not.

Q4 Is there an alternate pipe that can be used in lieu of the 28" Welded HDPE. Availability may be an issue due to the small quantity. Is SDR35 PVC pipe or C905 PVC pipe an acceptable alternate?

A4 The preferred material is welded HDPE due to the depth of the sanitary sewer pipe between the two tanks. However, due to the concern about material availability, PVC pipe is added as an alternate bid item.

Q5 Do the new manholes need to be epoxy coated?

A5 No, coatings are not required.

END OF DOCUMENT

BID FORM

A1/A2 RESERVOIRS AND B/C BOOSTER PUMP STATION

TABLE OF CONTENTS

	Page
ARTICLE 1 – Bid Recipient	1
ARTICLE 2 – Bidder’s Acknowledgements.....	1
ARTICLE 3 – Bidder’s Representations	1
ARTICLE 4 – Bidder’s Certification.....	2
ARTICLE 5 – Basis of Bid	3
ARTICLE 6 – Time of Completion.....	4
ARTICLE 7 – Attachments to this Bid.....	4
ARTICLE 8 – Defined Terms.....	4
ARTICLE 9 – Bid Submittal	4

ARTICLE 1 – BID RECIPIENT

1.01 This Bid is submitted to:

Marina Coast Water District

11 Reservation Road

Marina, CA 93933

ATTN: District Engineer

1.02 The undersigned Bidder proposes and agrees, if this Bid is accepted, to enter into an Agreement with Owner in the form included in the Bidding Documents to perform all Work as specified or indicated in the Bidding Documents for the prices and within the times indicated in this Bid and in accordance with the other terms and conditions of the Bidding Documents.

ARTICLE 2 – BIDDER’S ACKNOWLEDGEMENTS

2.01 Bidder accepts all of the terms and conditions of the Instructions to Bidders, including without limitation those dealing with the disposition of Bid security. This Bid will remain subject to acceptance for 60 days after the Bid opening, or for such longer period of time that Bidder may agree to in writing upon request of Owner.

ARTICLE 3 – BIDDER’S REPRESENTATIONS

3.01 In submitting this Bid, Bidder represents that:

A. Bidder has examined and carefully studied the Bidding Documents, and any data and reference items identified in the Bidding Documents, and hereby acknowledges receipt of the following Addenda:

<u>Addendum No.</u>	<u>Addendum Date</u>	<u>Addendum No.</u>	<u>Addendum Date</u>
_____	_____	_____	_____
_____	_____	_____	_____
_____	_____	_____	_____
_____	_____	_____	_____

B. Bidder has visited the Site, conducted a thorough, alert visual examination of the Site and adjacent areas, and become familiar with and satisfied itself as to the general, local, and Site conditions that may affect cost, progress, and performance of the Work.

C. Bidder is familiar with and has satisfied itself as to all Laws and Regulations that may affect cost, progress, and performance of the Work.

D. Bidder has carefully studied all: (1) reports of explorations and tests of subsurface conditions at or adjacent to the Site and all drawings of physical conditions relating to existing surface or subsurface structures at the Site that have been identified in the Supplementary Conditions, especially with respect to Technical Data in such reports and drawings, and (2) reports and drawings relating to Hazardous Environmental Conditions, if any, at or adjacent to the Site that have been identified in the Supplementary Conditions, especially with respect to Technical Data in such reports and drawings.

- E. Bidder has considered the information known to Bidder itself; information commonly known to contractors doing business in the locality of the Site; information and observations obtained from visits to the Site; the Bidding Documents; and any Site-related reports and drawings identified in the Bidding Documents, with respect to the effect of such information, observations, and documents on (1) the cost, progress, and performance of the Work; (2) the means, methods, techniques, sequences, and procedures of construction to be employed by Bidder; and (3) Bidder's safety precautions and programs.
- F. Bidder agrees, based on the information and observations referred to in the preceding paragraph, that no further examinations, investigations, explorations, tests, studies, or data are necessary for the determination of this Bid for performance of the Work at the price bid and within the times required, and in accordance with the other terms and conditions of the Bidding Documents.
- G. Bidder is aware of the general nature of work to be performed by Owner and others at the Site that relates to the Work as indicated in the Bidding Documents.
- H. Bidder has given Engineer written notice of all conflicts, errors, ambiguities, or discrepancies that Bidder has discovered in the Bidding Documents, and confirms that the written resolution thereof by Engineer is acceptable to Bidder.
- I. The Bidding Documents are generally sufficient to indicate and convey understanding of all terms and conditions for the performance and furnishing of the Work.
- J. The submission of this Bid constitutes an incontrovertible representation by Bidder that Bidder has complied with every requirement of this Article, and that without exception the Bid and all prices in the Bid are premised upon performing and furnishing the Work required by the Bidding Documents.

ARTICLE 4 – BIDDER'S CERTIFICATION

4.01 Bidder certifies that:

- A. This Bid is genuine and not made in the interest of or on behalf of any undisclosed individual or entity and is not submitted in conformity with any collusive agreement or rules of any group, association, organization, or corporation;
- B. Bidder has not directly or indirectly induced or solicited any other Bidder to submit a false or sham Bid;
- C. Bidder has not solicited or induced any individual or entity to refrain from bidding; and
- D. Bidder has not engaged in corrupt, fraudulent, collusive, or coercive practices in competing for the Contract. For the purposes of this Paragraph 4.01.D:
 - 1. "corrupt practice" means the offering, giving, receiving, or soliciting of any thing of value likely to influence the action of a public official in the bidding process;
 - 2. "fraudulent practice" means an intentional misrepresentation of facts made (a) to influence the bidding process to the detriment of Owner, (b) to establish bid prices at artificial non-competitive levels, or (c) to deprive Owner of the benefits of free and open competition;
 - 3. "collusive practice" means a scheme or arrangement between two or more Bidders, with or without the knowledge of Owner, a purpose of which is to establish bid prices at artificial, non-competitive levels; and

4. "coercive practice" means harming or threatening to harm, directly or indirectly, persons or their property to influence their participation in the bidding process or affect the execution of the Contract.

ARTICLE 5 – BASIS OF BID

- 5.01 Bidder will complete the Work in accordance with the Contract Documents for the following price(s):

Item No.	Description	Unit	Estimated Quantity	Bid Unit Price	Bid Price
1	Mobilization/Demobilization	LS	1		
2	Sheeting, Shoring and Bracing	LS	1		
3	Traffic Control	LS	1		
4	Yard Piping, Sitework, Paving and Fencing	LS	1		
5	1.6 MG Steel Water Tank A1	LS	1		
6	Booster Pump Station Building	LS	1		
7	Booster Pump Station Mechanical	LS	1		
8	Booster Pump Station Electrical	LS	1		
9	75 HP Pump and Motor	EA	3		
10	150 HP Pump and Motor	EA	3		
11	Relocate and Install 600 KW Generator	LS	1		
12	24-inch DIP in Imjin Parkway	LS	1		
13	24-inch DIP, BPS to 6 th Ave.	LS	1		
14	18-inch DIP, BPS to 6 th Ave	LS	1		
15	16-inch DIP, BPS to B-Zone Tie-In	LS	1		
16	28-inch HDPE Sanitary Sewer	LS	1		
17	HDPE Storm Sewer in 5 th Ave.	LS	1		
18	Wellfield Flow Meter	LS	1		
19	Chlorine System Modification	LS	1		
20	NOT USED	n/a	n/a	n/a	n/a
21	SCADA Integration Allowance	ALW	1	\$75,000	\$75,000
22	Permit Allowance	ALW	1	\$15,000	\$15,000
Total of All Unit Price Bid Items					\$

ALW=Allowance, CF=Cubic Foot, CY=Cubic Yard, DY=Day, HR=Hour, LF=Linear Foot, LS=Lump Sum, SF=Square Foot, SY=Square Yard

Bidder acknowledges that (1) each Bid Unit Price includes an amount considered by Bidder to be adequate to cover Contractor's overhead and profit for each separately identified item, and (2) estimated quantities are not guaranteed, and are solely for the purpose of comparison of Bids,

and final payment for all unit price Bid items will be based on actual quantities, determined as provided in the Contract Documents.

Total of Lump Sum and Unit Price Bids = Total Bid Price \$ _____

5.02 Alternate Bid Item(s):

Item No.	Description	Unit	Estimated Quantity	Bid Unit Price	Bid Price
A1	12-inch DIP, BPS to 5 th Ave	LS	1		
A2	1.6 MG Steel Water Tank A2	LS	1		
A3	Replace 300 KW Generator at Intermediate Reservoir	LS	1		
A4	24-inch PVC Sanitary Sewer	LS	1		

Total of Alternate Item Bid Prices: \$ _____

Base Bid Price: \$ _____

Total of Base Bid Plus Alternate Items \$ _____

ARTICLE 6 – TIME OF COMPLETION

6.01 Bidder agrees that the Work will be substantially complete and will be completed and ready for final payment in accordance with Paragraph 15.06 of the General Conditions on or before the dates or within the number of calendar days indicated in the Agreement.

6.02 Bidder accepts the provisions of the Agreement as to liquidated damages.

ARTICLE 7 – ATTACHMENTS TO THIS BID

7.01 The items listed in Document 00 43 93, Bid Submittal checklist, are submitted with and made a condition of this Bid.

ARTICLE 8 – DEFINED TERMS

8.01 The terms used in this Bid with initial capital letters have the meanings stated in the Instructions to Bidders, the General Conditions, and the Supplementary Conditions.

ARTICLE 9 – BID SUBMITTAL

BIDDER: *[Indicate correct name of bidding entity]*

By: _____
[Signature]

[Printed name] _____

(If Bidder is a corporation, a limited liability company, a partnership, or a joint venture, attach evidence of authority to sign.)

Attest:

[Signature] _____

[Printed name] _____

Title: _____

Submittal Date: _____

Address for giving notices:

Telephone Number: _____

Fax Number: _____

Contact Name and e-mail address: _____

Bidder's Contractor _____

License No.: _____

(where applicable)

SECTION 01 20 00

MEASUREMENT AND PAYMENT

PART 1 - GENERAL

1.01 SECTION INCLUDES

- A. Methods of Measurement
- B. Description of Bid Items

1.02 METHODS OF MEASUREMENT

- A. Materials and items of work which are to be paid for on the basis of measurement shall be measured in accordance with the method stipulated in the particular sections involved. In determining quantities, all measurements shall be made in a horizontal plane unless otherwise specified.
- B. Measurements shall be in accordance with U.S. Standard Measures. A pound is an avoirdupois pound. A ton is 2,000 pounds avoirdupois. The unit of liquid measure is the U.S. gallon. The unit of length is feet. The unit of volume is cubic yards.
- C. Material not used from a transporting vehicle shall be determined by the ENGINEER and deducted from the certified tag.
- D. When material is to be measured and paid for on a volume basis and it would be impractical to determine the volume, or when requested by the CONTRACTOR in writing and approved by the ENGINEER in writing, the material will be weighed and converted to volume measurement for payment purposes. Factors for conversion from weight measurement to volume measurement will be determined by the ENGINEER and shall be agreed to by the CONTRACTOR before such method of measurement of pay quantities will be adopted.
- E. Full compensation for all expense involved in conforming to the above requirements for measuring and weighing materials shall be considered as included in the unit prices paid for the materials being measured or weighed and no additional allowances will be made therefore.
- F. Quantities of material wasted or disposed of in a manner not called for under the Contract; or rejected loads of material, including material rejected after it has been placed by reason of failure of the CONTRACTOR to conform to the provisions of the Contract; or material not unloaded from the transporting vehicle; or material placed outside the lines indicated on the plans or given by the ENGINEER; or material remaining on hand after completion of the Contract, will not be paid for and such quantities will not be included in the final total quantities. No compensation will be allowed for hauling rejected material.
- G. Bid items include all work necessary to complete the specific item described and not otherwise included in other bid items. The CONTRACTOR shall include in each bid item

all costs required to construct the work in accordance with the Contract Documents and as identified below.

1.03 DESCRIPTION OF BID ITEMS

A. Bid Item 1: Mobilization/Demobilization.

1. The lump sum bid price for this item shall constitute full compensation for mobilization and demobilization including but not limited to equipment shipping and delivery, equipment set up, materials shipping and delivery, utility coordination, permitting including the Monterey County Construction and Encroachment Permits and the City of Seaside Encroachment Permit, removal of equipment, and project closeout. The Mobilization/Demobilization bid item shall not be in excess of ten percent (10%) of the total bid schedule. Twenty-five percent (25%) of the total Mobilization / Demobilization bid price shall be considered the cost of Demobilization and will not be paid until completion of the work.

B. Bid Item 2: Sheeting, Shoring and Bracing

1. The lump sum bid price for this item shall constitute full compensation for all material, labor, equipment, tools, and services necessary to provide sheeting, shoring and bracing of excavations, trenches and grading as required in the Contract Documents. Cost shall include any engineering or geotechnical investigations performed by the Contractor.

C. Bid Item 3: Traffic Control

1. The lump sum bid price for this item shall constitute full compensation for all material, labor, equipment, tools, and services necessary to provide traffic control around the work as required in the Encroachment Permit(s). This item includes, but is not limited to, temporary striping, signage, delineators, cones, labor and flagmen.

D. Bid Item 4: Yard Piping, Sitework, Paving and Fencing

1. The lump sum bid price for this item shall constitute full compensation for all material, labor, equipment, tools, and services necessary to complete all work within the easement limits not paid elsewhere. Work includes, but is not limited to, demolition of pavements, fences and other items; removal of trees, including trees within the pipeline easements; on-site storm drain pipe, catch basins and manholes; on-site ductile iron and steel pipe, from 6-inch through 30-inch, including vaults, valves and fittings; site grading and compaction; asphalt paving and aggregate base; inspection and cleaning of the existing storm drain pipeline; removal of the existing oil-water separator and replacement with a catch basin; and providing new fences, gates and one electric gate operator.
2. Item includes grading and paving the new driveway from the booster pump station west into the City of Marina property, and any repaving required at the entrances at the south end of the tank site easement.
3. Item includes new motorized rolling gate and new motorize lift arm on the access easement from 5th Avenue, with associated electrical work.
4. Item includes 1-inch water service and backflow preventer for future landscape irrigation, as shown on the Drawings.

E. Bid Item 5: 1.6 MG Steel Water Tank

1. The lump sum bid price for this item shall constitute full compensation for all material, labor, equipment, tools, and services necessary to provide Reservoir A1, including, but

not limited to, foundation preparation by over-excavation and compaction, reinforced concrete ring wall foundation, oiled sand pad, welded steel tank, interior and exterior tank appurtenances, interior and exterior coating, disinfection and leak testing.

2. Water for leakage testing will be provided by the Owner at no cost. If the tank fails the leakage test and must be drained, repaired and retested, water for second and subsequent tests will be charged at the MCWD standard water rates.

F. Bid Item 6: Booster Pump Station Building

1. The lump sum bid price for this item shall constitute full compensation for all material, labor, equipment, tools, and services necessary to provide the pump station building as shown on the Drawings, including but not limited to foundation preparation and compaction, cast-in-place concrete floors and walls, concrete masonry unit walls, concrete roof system, roof hatches and skylights, wall vents and louvers, doors and hardware, railings, stairs, finishes, textures and painting.
2. Item includes the center pump column (pump can) for a future pump, and the seven concrete pedestals for the pumps.

G. Bid Item 7: Booster Pump Station Mechanical

1. The lump sum bid price for this item shall constitute full compensation for all material, labor, equipment, tools, and services necessary to provide all steel and ductile iron piping in and under the building, fittings, valves, meters, fans, floor grates and items not covered under other building pay items.

H. Bid Item 8: Booster Pump Station Electrical

1. The lump sum bid price for this item shall constitute full compensation for all material, labor, equipment, tools, programming and services necessary to provide the electrical switchgear, Motor Control Center, SCADA and controls, antennas, conduits and cables, building lighting and wiring.
2. Item includes providing primary electrical service conduits from the PG&E point of connection to the transformer, the pre-cast transformer pad and the protective bollards.
3. Item includes two 16-inch flow meters within the pump station, and one 24-inch flow meter located in an exterior vault.
4. Item includes all exterior lighting, cameras, cables and conduits in the yard.
5. Item includes all conduits, cables, level instruments and antennas on installed on Tank A1.
6. Item includes telemetry modifications at the Marina BPS/Reservoir 2 site, including antennas, conduits, cables and related equipment.

I. Bid Item 9: 75 HP Pump and Motor

1. The unit bid price per pump for this item shall constitute full compensation for all material, labor, equipment, tools, and services necessary to provide the 75 HP pump, steel pump column (pump can), pump base, electric motor, appurtenances, and mounting hardware as described in the contract documents.
2. Include the concrete pedestal in Bid Item 6, Pump Station Building.

J. Bid Item 10: 150 HP Pump and Motor

1. The unit bid price per pump for this item shall constitute full compensation for all material, labor, equipment, tools, and services necessary to provide the 150 HP pump,

steel pump column (pump can), pump base, electric motor, appurtenances, and mounting hardware as described in the contract documents.

2. Include the concrete pedestal in Bid Item 6, Pump Station Building.

K. Bid Item 11: Relocate and Install 600 KW Generator

1. The lump sum bid price for this item shall constitute full compensation for all material, labor, equipment, tools, and services necessary to relocate, install and test the existing 600 KW generator and automatic transfer switch from the existing booster pump station at the Sand Tank to the new booster pump station.
2. Item includes the concrete pedestal at the new site.
3. Include conduit and cable in Bid Item 8, BPS Electrical.

L. Bid Item 12: 24-in DIP in Imjin Parkway

1. The lump sum bid price for this item shall constitute full compensation for all material, labor, equipment, tools, and services necessary to provide the new pipeline in Imjin Parkway, including, but not limited to, 1,080 LF of 24-inch ductile iron pipe with fittings, 3 each 24-inch butterfly valves, cut-in and connection to existing 24-inch steel pipe, pressure testing and disinfection of the pipeline, bedding, backfill, concrete thrust blocks, repaving of the trench, curb replacements, slurry sealing and restriping the traffic lane.
2. Item includes custom transition fittings from ductile iron to the existing concrete cylinder pipe.
3. Item includes second excavation to provide a 24-inch blind flange to isolate the new tee from the old C-Zone transmission main after the system transitions to the new booster pump station.

M. Bid Item 13: 24-inch DIP, BPS to 6th Ave

1. The lump sum bid price for this item shall constitute full compensation for all material, labor, equipment, tools, and services necessary to provide the 24-inch pipeline from the booster pump station to 6th Avenue, including, but not limited to, 822 LF of 24-inch ductile iron pipe, four 24-inch butterfly valves, two 24-inch tees, cut-in and connection to the existing 24-inch pipe in 6th Avenue, pressure testing and disinfection of the pipeline, bedding, backfill, concrete thrust blocks, and repaving of sidewalks and pedestrian paths.
2. Item includes custom transition fittings from ductile iron to the existing concrete cylinder pipe.
3. Item includes second excavation to provide a 24-inch blind flange between the two tees after the system transitions to the new booster pump station.

N. Bid Item 14: 18-inch DIP, BPS to 6th Ave

1. The lump sum bid price for this item shall constitute full compensation for all material, labor, equipment, tools, and services necessary to provide the 18-inch pipeline from the booster pump station to 6th Avenue, including, but not limited to, 815 LF of 18-inch ductile iron pipe, 1 each 18-inch butterfly valve, pressure testing and disinfection of the pipeline, bedding, backfill, and repaving of sidewalks and pedestrian paths.

O. Bid Item 15: 16-in DIP, BPS to B-Zone Tie-In

1. The lump sum bid price for this item shall constitute full compensation for all material, labor, equipment, tools, and services necessary to provide the 16-inch pipeline from the booster pump station to the existing 16-inch B-Zone pipeline, including, but not limited to, 520 LF of 16-inch ductile iron pipe, three 16-inch butterfly valves, one 12-inch gate valve, two 16-inch tees, cut-in and connection to the existing 16-inch steel pipe, pressure testing and disinfection of the pipeline, bedding, backfill, concrete thrust blocks, and repaving.
 2. Item includes custom transition fittings from ductile iron to the existing concrete cylinder pipe.
- P. Bid Item 16: 28-in HDPE Sanitary Sewer
1. The lump sum bid price for this item shall constitute full compensation for all material, labor, equipment, tools, and services necessary to provide a new gravity sanitary sewer, including, but not limited to, 261 LF of 28-inch DR 17 HDPE pipe, 4 sanitary sewer manholes, by-pass pumping, trench bedding and backfill, leakage testing of new work, removing 160 LF of 15-inch gravity sewer, and all related work required to connect the new sewer to the existing system.
- Q. Bid Item 17: HDPE Storm Sewer in 5th Avenue
1. The lump sum bid price for this item shall constitute full compensation for all material, labor, equipment, tools, and services necessary to provide a new gravity storm sewer in 5th Avenue, including, but not limited to, 675 LF of 15-inch HDPE storm pipe, three storm drain manholes, cast-in-place concrete headwall, trench bedding, backfill, compaction and repaving, and slurry seal of the traffic lane, and all related work required to connect the new sewer to the existing system.
- R. Bid Item 18: Wellfield Flow Meter
1. The lump sum bid price for this item shall constitute full compensation for all material, labor, equipment, tools, and services necessary to provide a new flow meter on the wellfield water main near the Intermediate Reservoir. This item includes, but is not limited to, one 24-inch ultrasonic flow meter with pre-cast concrete vault, traffic-rated locking lid, two 24-inch butterfly valves, remote read controller, conduit, cables, trench bedding, backfill and restoration, and all related work required to add the new equipment onto the existing pipeline.
 2. Item also includes calibration, programming and start-up and testing support for this equipment.
- S. Bid Item 19: Chlorination System Modification
1. The lump sum bid price for this item shall constitute full compensation for all material, labor, equipment, tools, and services necessary to modify the wellfield pipeline chlorination system as shown on the Drawings. This item includes, but is not limited to, providing a packaged dosing system including a PLC, three dosing pumps and mounting hardware, one saddle tap of the existing pipeline, one pre-cast meter vault, an injection quill with ½-inch PE tubing connection to the dosing pump system, ½-inch PE tubing in a 1.5-inch conduit from the injection point to the chlorine building, and all conduits and cables required for this item of work.
 2. Item also includes removing the existing chloring injection point vault, replacing 8 LF of the existing pipeline, bedding, backfill, trench compaction and site restoration.

3. Item also includes calibration, programming and start-up and testing support for this equipment.
- T. Bid Item 20: NOT USED
- U. Bid Item 21: SCADA Integration Allowance
1. This allowance is for the reimbursement of the fees charged by the District's SCADA integration consultant. The value of this allowance is pre-entered in the Bid Form.
 2. Payment under this item shall be for the actual cost of the fees charged, as reflected on the SCADA Integrator's invoices. Contractor's costs with respect to coordinating the SCADA programming shall be included under Bid Item 8, Pump Station Electrical.
- V. Bid Item 22: Permit Allowance.
1. This allowance is for the reimbursement of the permit fees charged by the City of Marina for Encroachment and Construction Permits. The value of this allowance is pre-entered in the Bid Form.
 2. Payment under this item shall be for the actual cost of the permit fees, as reflected on the issuing agency invoices. Contractor's costs with respect to obtaining permits shall be included under Bid Item 1, Mobilization/Demobilization.
- W. Alternate Bid Item A1: 12-in DIP, BPS to 5th Avenue
1. The lump sum bid price for this item shall constitute full compensation for all material, labor, equipment, tools, and services necessary to provide the 12-inch ductile iron pipeline from 5th Avenue to the Booster Pump Station as shown on the Drawings (from Station 101+00 to Station 107+32), including the hot tap connection to the existing main in 5th Avenue. This item includes, but is not limited to, the ductile iron pipe, fittings, excavation, bedding, backfill, compaction and repaving the trench.
 2. The gate valve at station 107+32 is not included in the alternate item. If this item is not included in the project, an MJ cap must be provided at that gate valve.
- X. Alternate Bid Item A2: 1.6 MG Steel Water Tank
1. The lump sum bid price for this item shall constitute full compensation for all material, labor, equipment, tools, and services necessary to provide Reservoir A2, including, but not limited to, foundation preparation by over-excavation and compaction, reinforced concrete ring wall foundation, oiled sand pad, welded steel tank, interior and exterior tank appurtenances, interior and exterior coating, disinfection and leak testing.
 2. This item includes the associated 20-inch water main (yard piping) from the tank to the fitting at station 1+69. If this item is not included in the project, an MJ plug must be provided at that elbow.
 3. This item includes all conduits, cables and level instruments on installed on Tank A2.
 4. Water for leakage testing will be provided by the Owner at no cost. If the tank fails the leakage test and must be drained, repaired and retested, water for second and subsequent tests will be charged at the MCWD standard water rates.
 5. This item includes the stormwater catch basin adjacent to Reservoir A2 and the 12-inch pipe to SDMH 1. A stub-out and plug shall be provided on SDMH 1 for the future 12-inch pipe.
 6. If this item is not included in the project, the existing AC pavement under Tank A2 shall be left in-place (nominal diameter of 112-ft). Grading and paving outside the tank A2

shall extend to the outside edge of the future foundation (diameter of 117-ft). Provide 2-inches of AC as a weather seal over the segment between existing and new pavements.

Y. Alternate Bid Item A3: Replace 300KW Generator at Intermediate Reservoir

1. The lump sum bid price for this item shall constitute full compensation for all material, labor, equipment, tools, and services necessary to replace the generator at the Intermediate Reservoir/ F-Booster Pump Station site. This item includes, but is not limited to, removal and disposal of the existing generator and fuel tank, saw-cutting and removal of the existing containment wall and generator slab, providing a cast-in-place concrete slab, providing a 300KW generator with sound enclosure, conduit and cables to connect to the existing automatic transfer switch, installation, start-up and testing.

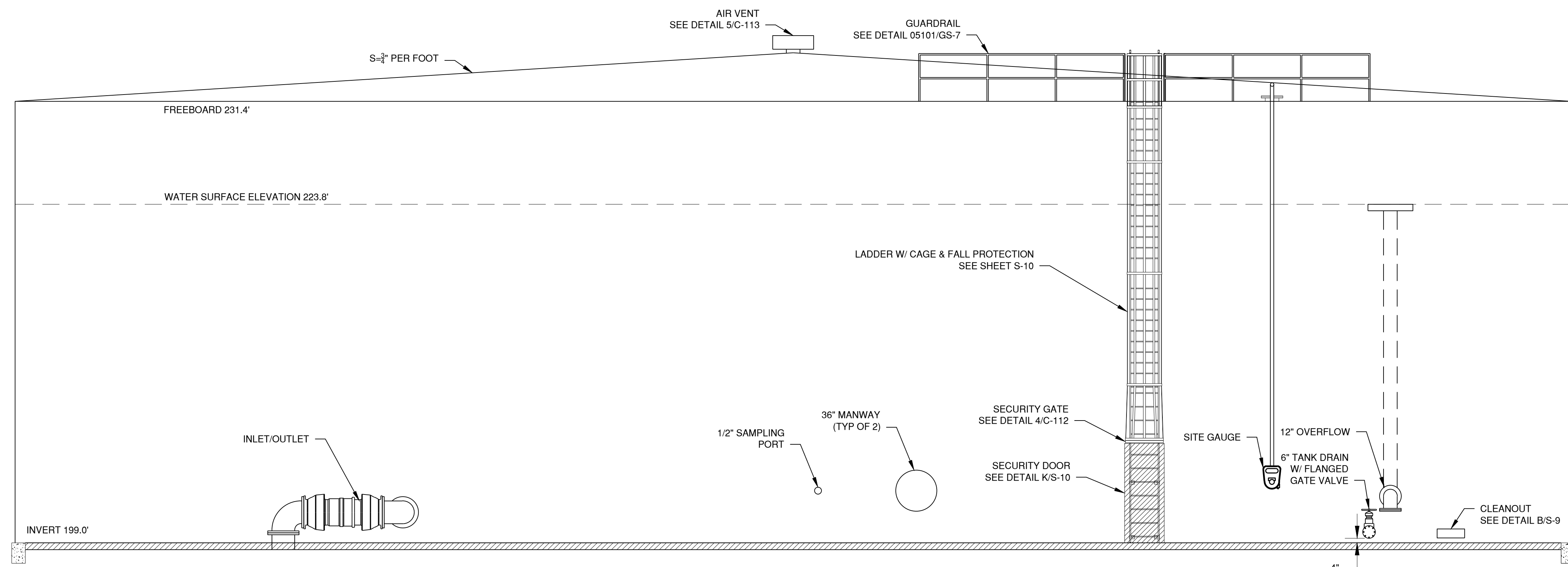
Z. Alternate Bid Item A4: 24-in PVC Sanitary Sewer

1. The lump sum bid price for this item shall be the cost difference for providing 24-inch PS115 PVC gravity sewer pipe per Section 33 31 11 instead of 28-inch HDPE pipe under Bid Item 16. Price shall include the difference in material, labor, equipment, tools, and services, including changes in the manhole fittings.
2. A net cost increase shall be entered as a positive number on the bid form. A net cost reduction shall be entered as a negative number on the bid form.

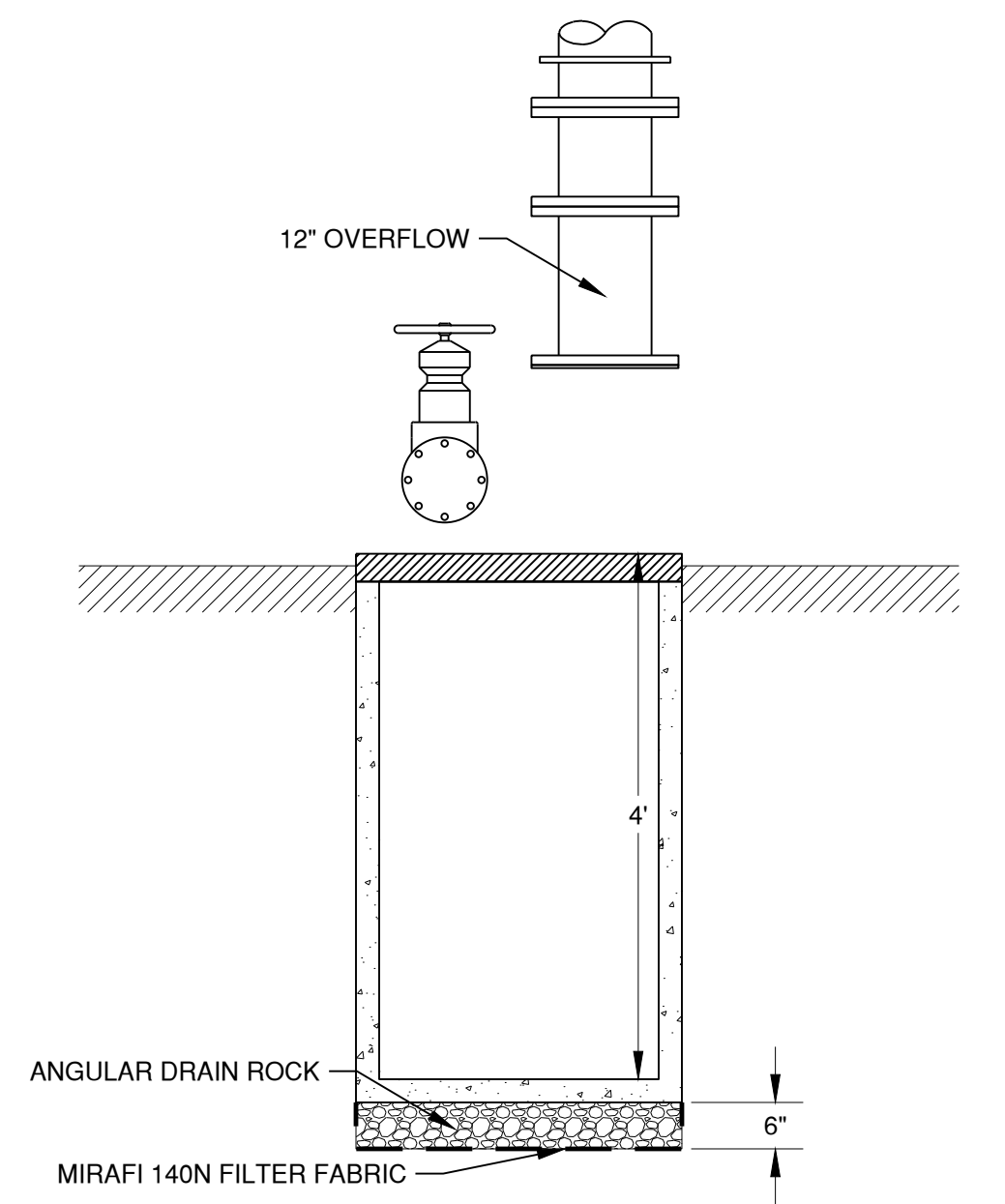
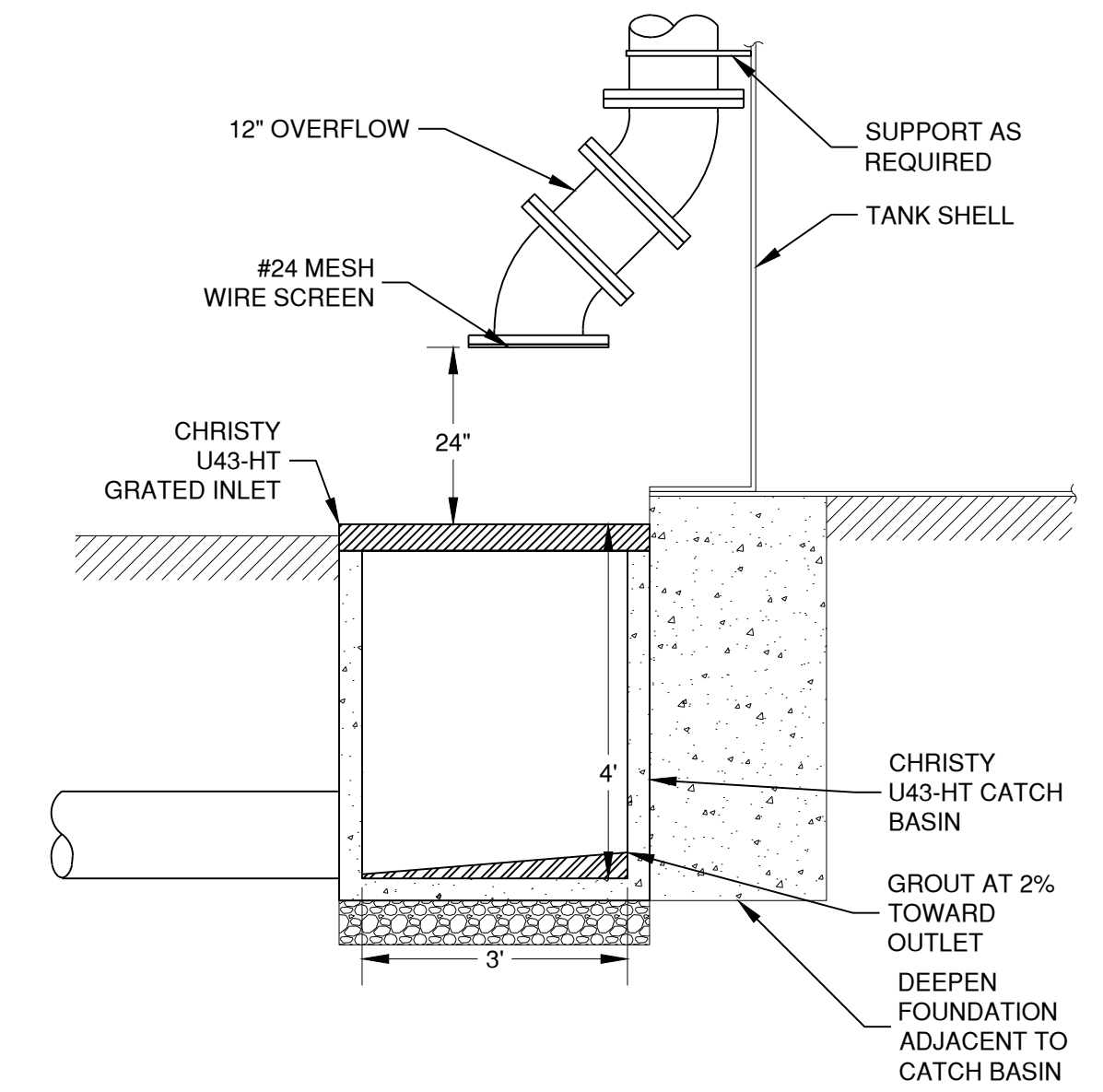
PART 2 - PRODUCTS (Not Used)

PART 3 - EXECUTION (Not Used)

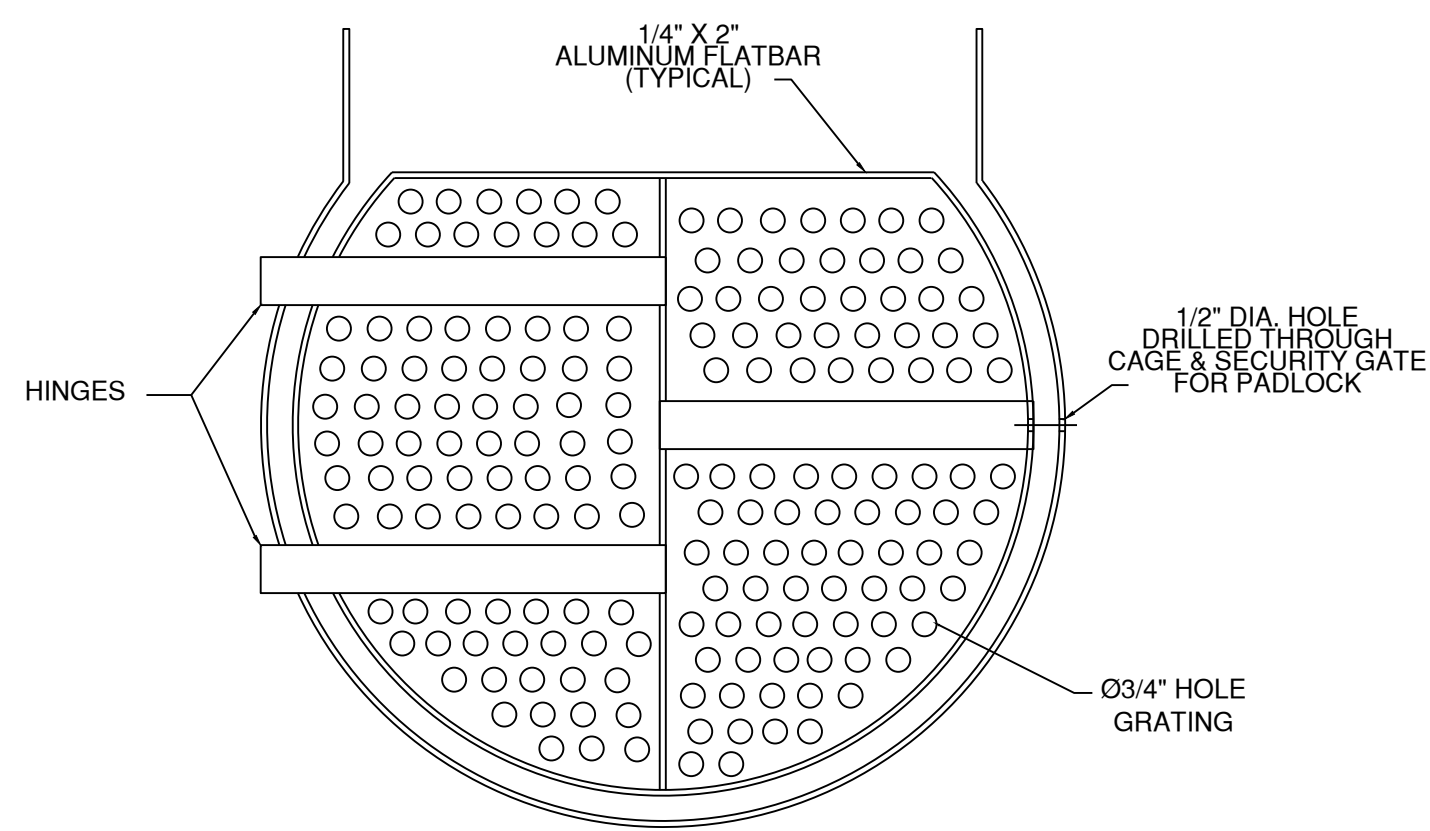
END OF SECTION



TYPICAL TANK PROFILE A
C-110
1"=5'



OVERFLOW TERMINATION 3
NTS
C-110



SECURITY GATE 4
NTS
C-112

NOTES:
SEE 1/C-110 FOR LOCATIONS OF EACH TANK

C:\DWG\DWG\2020\11\A1A2_Tank_Details.dwg 2:52:01 PM 11/18/2020

NO.	REVISION DESCRIPTION	DATE	APPR



MARINA COAST WATER DISTRICT
11 RESERVATION ROAD
MARINA, CA 93933
(831) 384-6131

Schaaf & Wheeler
CONSULTING CIVIL ENGINEERS
3 QUAIL RUN CIRCLE, STE. 101
SALINAS, CA 93907
(831) 883-4848



A1/A2 RESERVOIRS AND B/C BOOSTER PUMP STATION

TANK DETAILS

DATE: 12/23/20
SCALE: AS SHOWN
DESIGN: MF
DRAWN: MF
CHECK: AAS

SHEET
C-112
OF