

ADDENDUM NO. 6

PROJECT: A1/A2 Reservoirs and B/C Booster Pump Station Project

CIP NO.: GW-0112

FROM: District Engineer
Marina Coast Water District
11 Reservation Road
Marina, CA 93933

ISSUED: February 12, 2021

TO: **Prospective Bidders**

This Addendum forms a part of the Bidding Documents and will be incorporated into Contract Documents. Insofar as the Specifications or Drawings or both are inconsistent, this Addendum governs. Acknowledge receipt of the Addendum by inserting its number in Document 00410 – Bid Form. **FAILURE TO DO SO WILL SUBJECT BID TO DISQUALIFICATION.**

PART 1 – BIDDER INFORMATION ITEMS

- A. The Bid Date remains unchanged, 2:00 on February 24, 2021. The bid location is 920 Second Avenue, Suite A, Marina, CA 93933.
- B. The height of the water tanks is reduced from 32.2-ft at the tank shoulder to 31.2-ft at the tank shoulder. The roof peak height (at base of vent) is revised to 35.0-ft.

PART 2 - CHANGES TO PROJECT MANUAL

- A. Section 33 16 00, Water Utility Storage Tanks, the following items are revised:
 - 1.07.A.2. Maximum process fluid height: 24' – 10"
 - 1.07.A.27. Overflow maximum discharge rate: 2,200 gallons per minute.
 - 1.07.A.28. Normal maximum water withdrawal rate; 4,800 gallons per minute.
 - 1.08.C. Access ports. Two 36-inch circular mono-bolted manways shall be provided in the sidewall of the reservoir. Manways shall be gasketed and provide a watertight seal. Manway openings shall be structurally reinforced.

PART 3 - CHANGES TO DRAWINGS

- A. Sheet C-012, Detail 4. The callout "INSTALL TWO SOCKET CLAMPS..." is revised to read "INSTALL TWO MJ RESTRAINT COLLARS..."
- B. Sheet C-015, Detail 2. Add the following note:
NOTE: CONTRACTOR MAY PROVIDE A 24" WYE OR A 24" TEE AND 45° BEND.
- C. Sheet C-104 is reissued to define the transition point between ductile iron pipe and cement mortar lined and coated steel pipe, and to show the valves on the pump station intake pipes as they are shown on C-120 (attached).

- D. Sheet C-111, is reissued revising the height of the tank callout (attached).
- E. Sheet C-112, is reissued revising the elevation of the tank shoulder in Section A (attached).
- F. Sheet S-10, Detail H, change the vertical dimension from 32.2 FT AFF to 31.2 FT AFF.

PART 4 – QUESTIONS RECEIVED

Q1 Looking at the plan set there is a significant contradiction on the roof hatches for the Pump Station. Specs and Arch plans indicate a standard equipment hatch rated for 40 psf live load while the structural plans show 150 psf with deferred submittals. Can you please clarify which spec to follow?

A1 Roof hatches shall be rated for 40 psf per Section 07 72 33. The structural details label it as a non-traffic rated unit.

Q4 In Section 43 24 10 – Vertical Turbine Pumps, the named manufacturers are Flowserve and Weir Floway. Would it be possible to add Xylem Goulds as a named manufacturer?

A4 Per Section 43 24 10, a pump meeting the specification would be an acceptable or-equal. Note that minimum pump efficiencies were added to that section under Addendum 4.

Q5 Will you please provide a specification for “Socket Clamps” as called out on detail 4 sheet C-012?

A5 “Socket Clamp” means “mechanical joint restraint collar”. The detail is revised to use the correct name.

Q6 Will you consider revising detail 2 on sheet C-015 the wye shown has a very long lead time? A tee and 45 are going to be dramatically more available. Is the (F) Blind Flange required for this project?

A6 Yes, a standard tee and a 45-bend are an acceptable substitute for the 24-inch wye. A note is added to the detail making that an option. Yes, the blind flange is included in the project, to be installed after the new booster pump station is placed into service.

Q7 Will a PVC liner be required for the manholes as shown in the standard detail on C-118?

A7 No, manhole liners are not required.

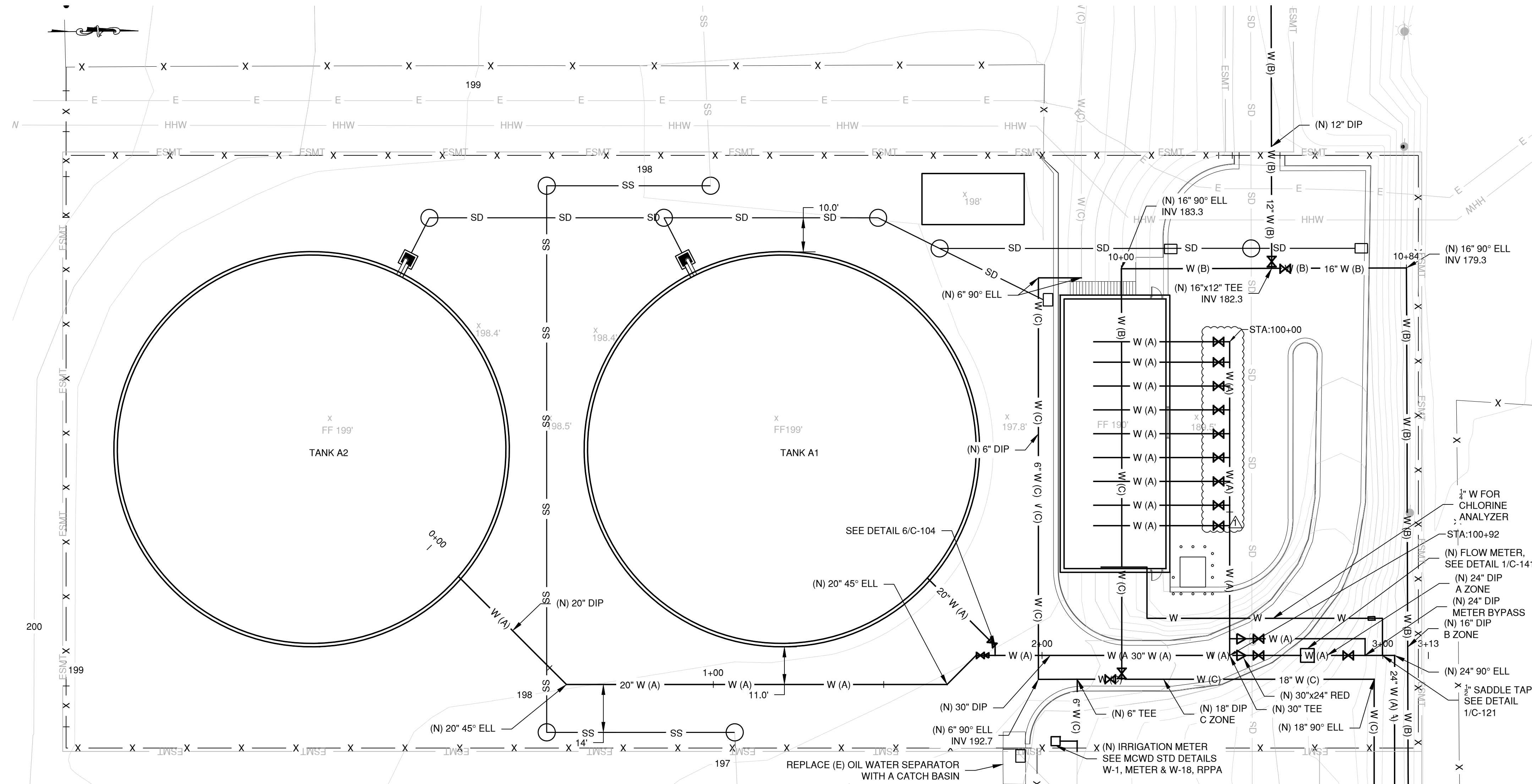
Q8 Will you please provide section 33 16 96 Tank Mixing System as called out on sheet C-110 Note 8?

A8 Section 33 16 96 was issued as an attachment to Addendum 2.

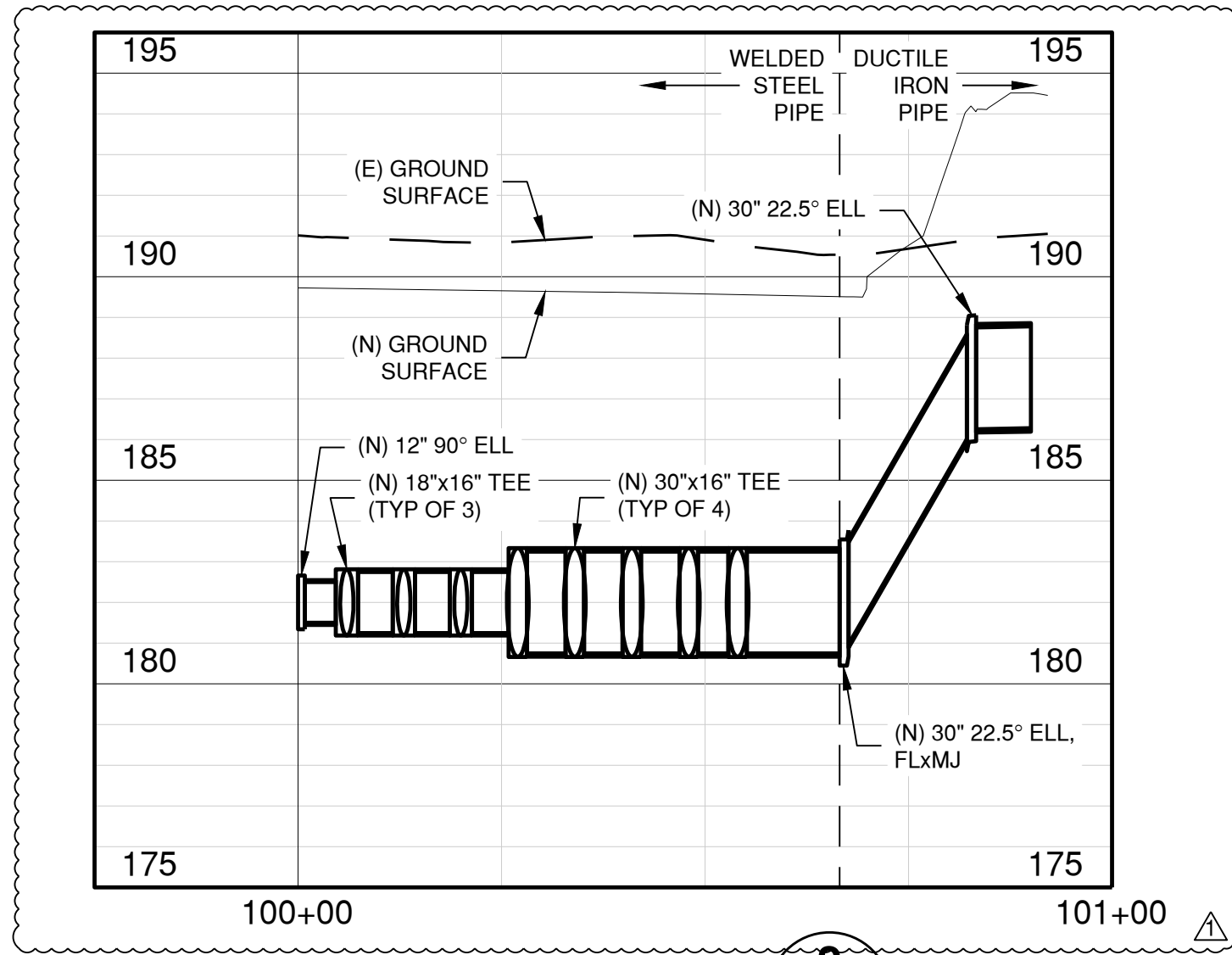
Q9 What material is the 30” Manifold to be constructed out of shown on C-120 and C-104?

A9 The 30-inch manifold and pump station laterals are to be cement mortar lined and coated steel pipe per Section 33 11 13.20. Sheet C-104 is reissued with a clarification showing the transition point from ductile iron to steel pipe.

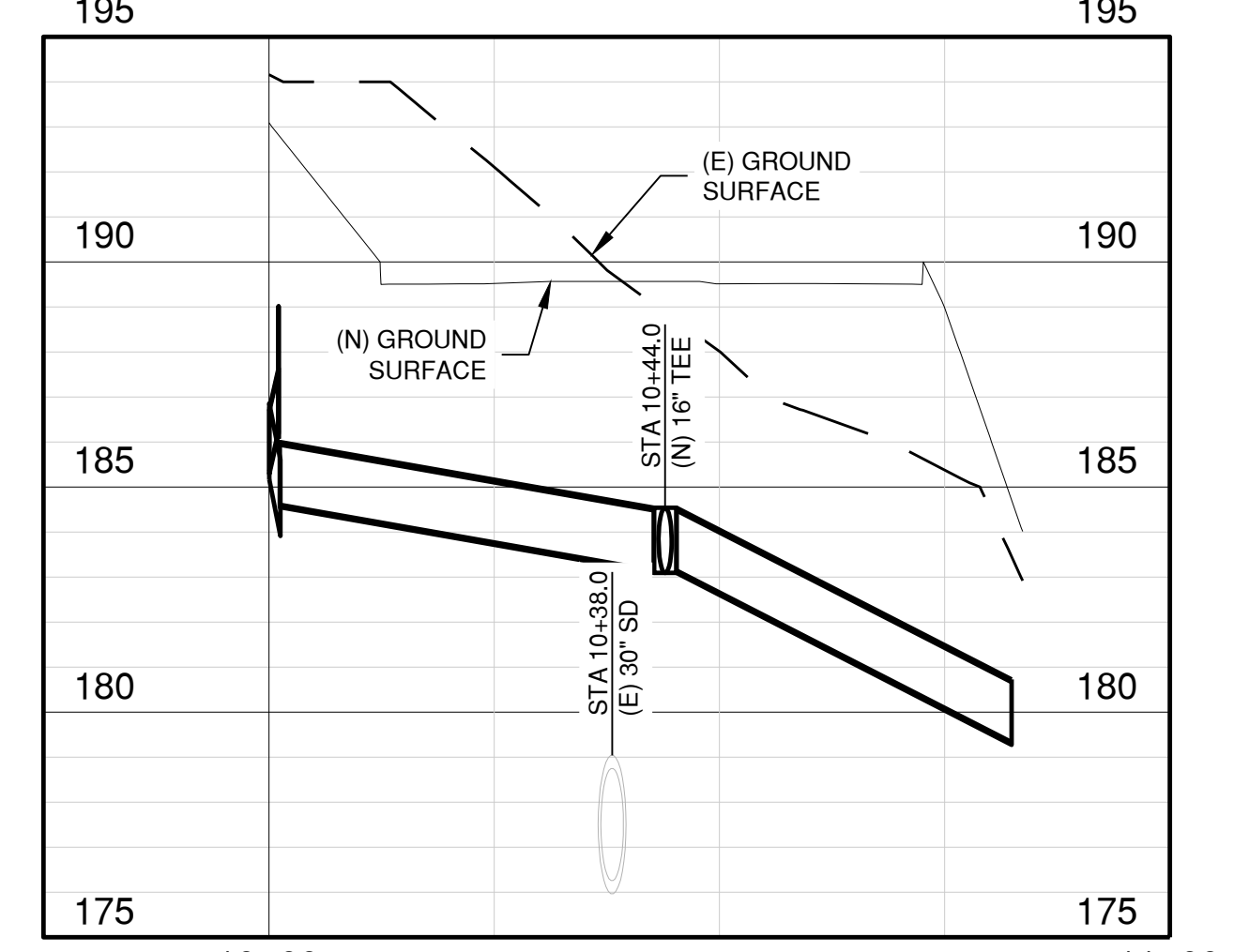
END OF DOCUMENT



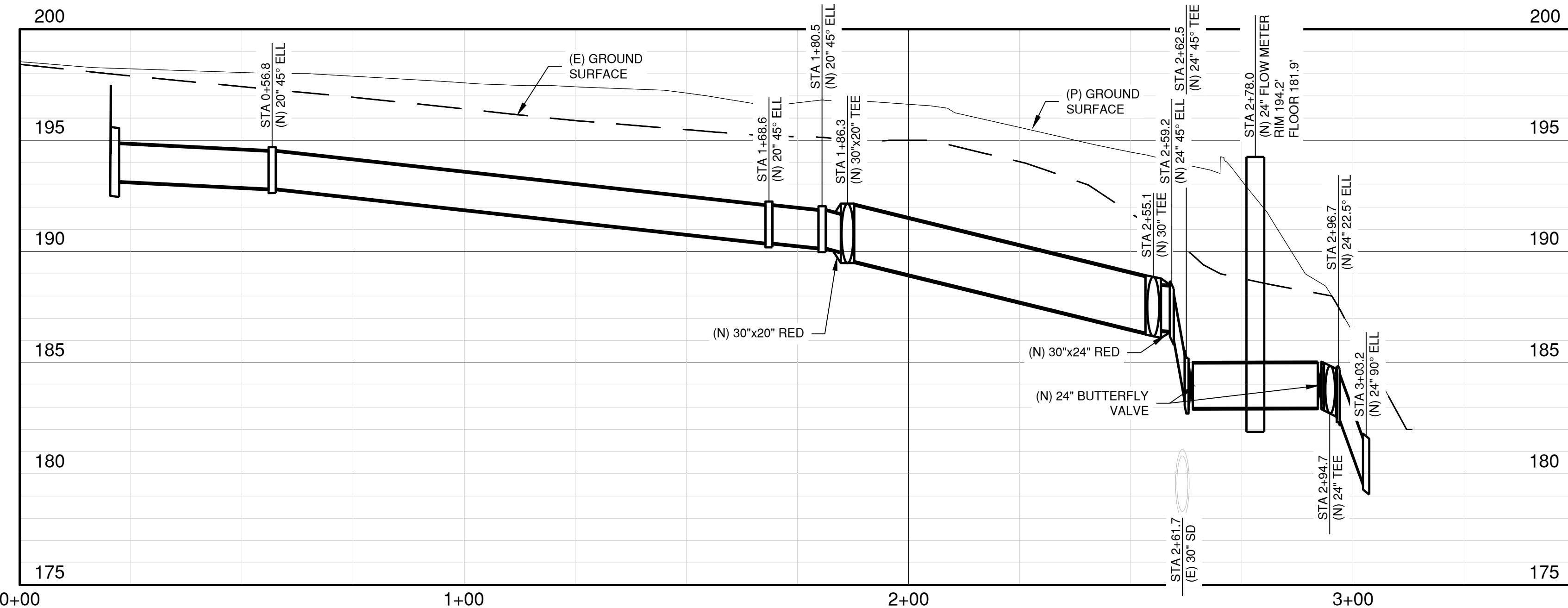
YARD PIPING PLAN
 1
 SCALE: 1 INCH = 20 FEET



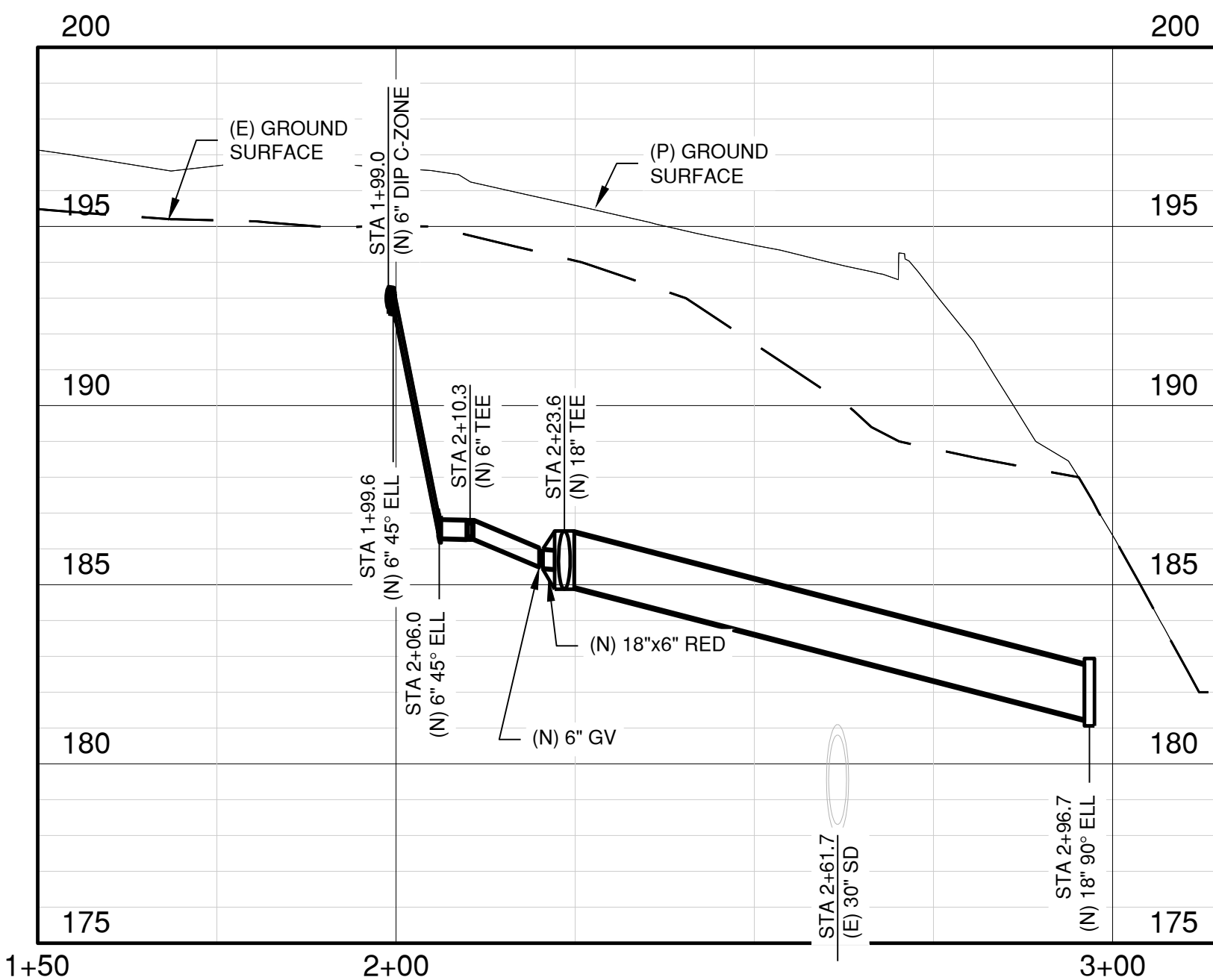
HEADER PROFILE
 2
 HORIZONTAL: 1"=20'
 VERTICAL: 1"=4'



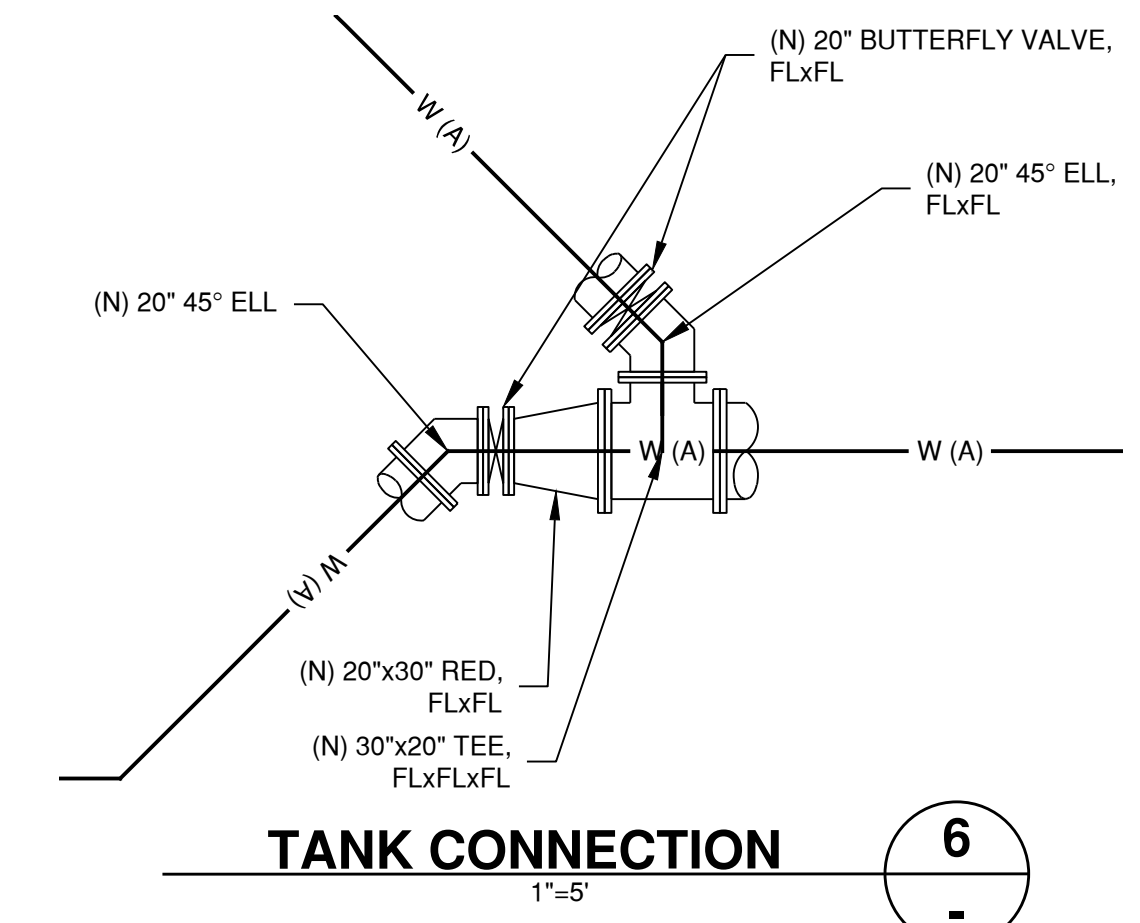
B-ZONE YARD PROFILE
 3
 HORIZONTAL: 1"=20'
 VERTICAL: 1"=4'



A-ZONE YARD PROFILE
 4
 HORIZONTAL: 1"=20'
 VERTICAL: 1"=4'



C-ZONE YARD PROFILE
 5
 HORIZONTAL: 1"=20'
 VERTICAL: 1"=4'



TANK CONNECTION
 6
 1"=5'

COORDINATES			
	STA	NORTHING	EASTING
(N) 20" 45" ELL	0+56.8	2133908.39	5741587.59
(N) 20" 45" ELL	1+68.6	2134019.99	5741591.98
(N) 20" 45" ELL	1+80.5	2134028.84	5741583.80
(N) 30"x20" TEE	1+86.3	2134034.42	5741584.02
(N) 30" TEE	2+55.1	2134103.19	5741586.72
(N) 24" 45" ELL	2+59.2	2134107.43	5741586.89
(N) 24" 45" ELL	2+62.5	2134110.62	5741587.01
(N) 24" 22.5" ELL	2+96.7	2134144.41	5741588.37
(N) 24" 90" ELL	3+03.2	2134150.54	5741588.58

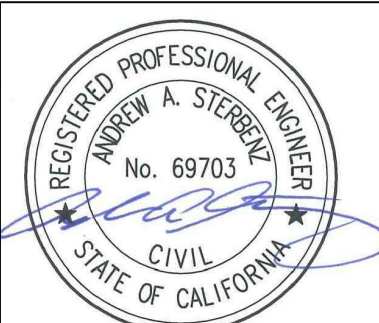
- NOTES:
 1. FOR PUMP STATION PLAN, SEE SHEET C-120
 2. FOR PIPELINE PLAN & PROFILE, SEE SHEET C-012
 3. MAINTAIN 3.5' MINIMUM COVER FOR ALL WATER PIPES

NO.	REVISION DESCRIPTION	DATE	APPR



MARINA COAST WATER DISTRICT
 11 RESERVATION ROAD
 MARINA, CA 93933
 (831) 384-6131

Schaaf & Wheeler
 CONSULTING CIVIL ENGINEERS
 3 QUAIL RUN CIRCLE, STE. 101
 SALINAS, CA 93907
 (831) 883-4848

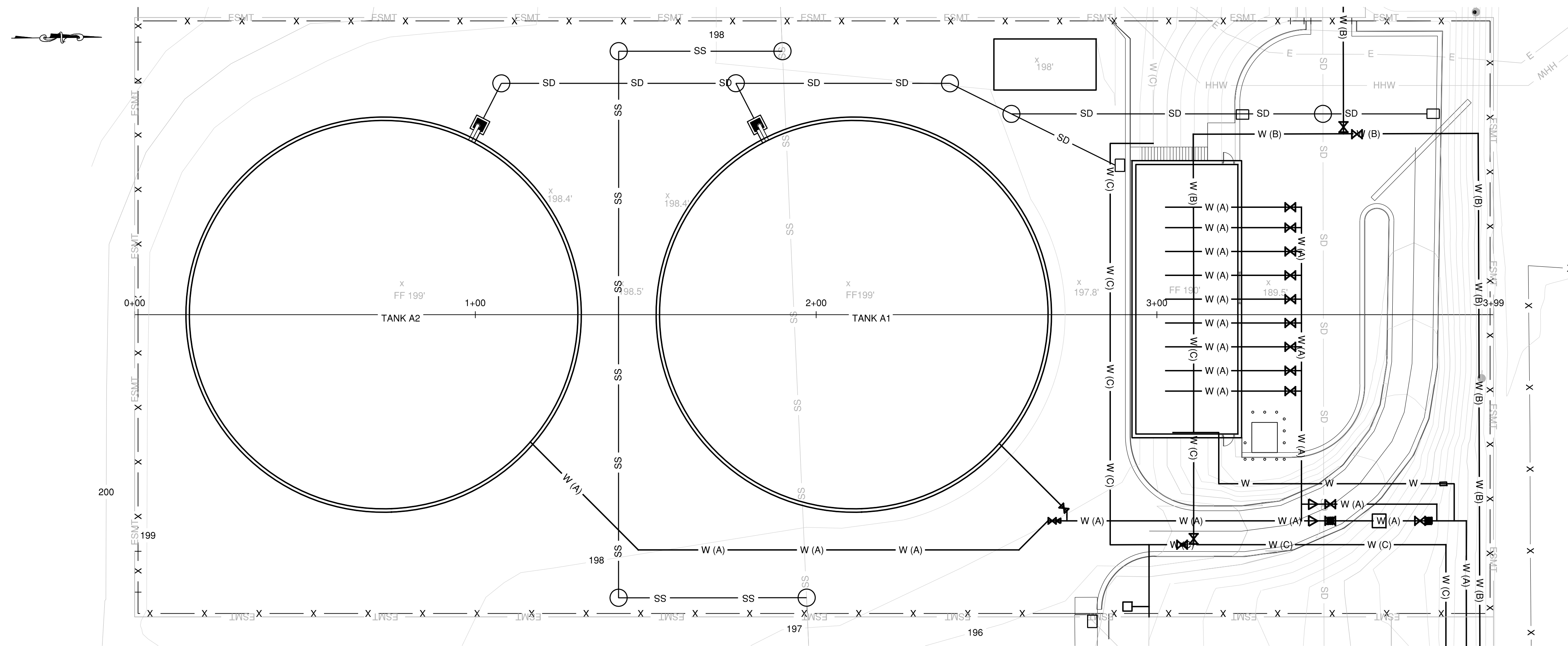


A1/A2 RESERVOIRS AND B/C BOOSTER PUMP STATION

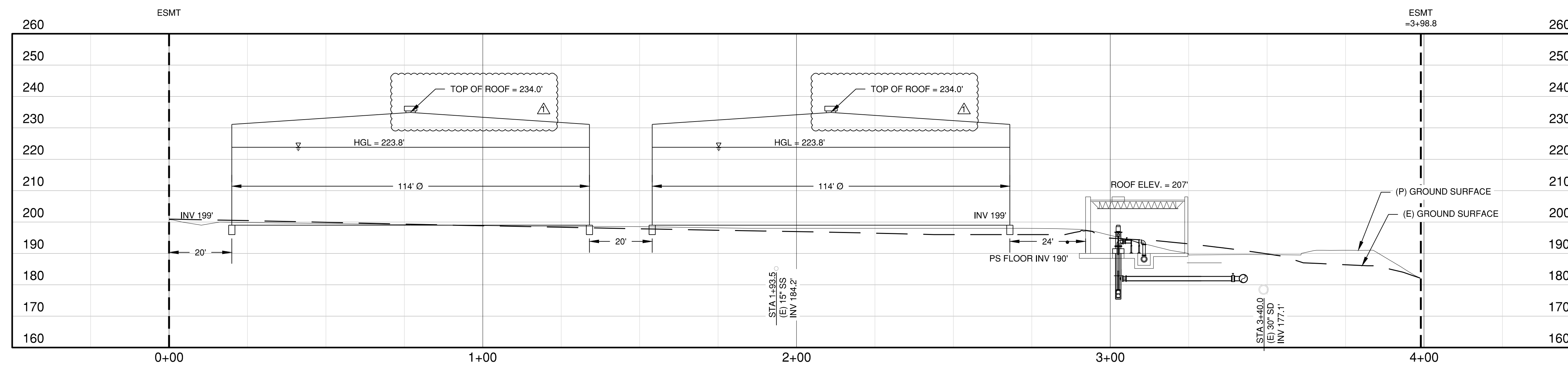
YARD PIPING PLAN & PROFILE

DATE: 12/23/20
 SCALE: AS SHOWN
 DESIGN: CJM
 DRAWN: CJM
 CHECK: AAS

SHEET
C-104
OF



TANK PROFILE ALIGNMENT 1
 1"=20'



TANK SITE PROFILE 2
 HORIZONTAL: 1"=20'
 VERTICAL: 1"=20'

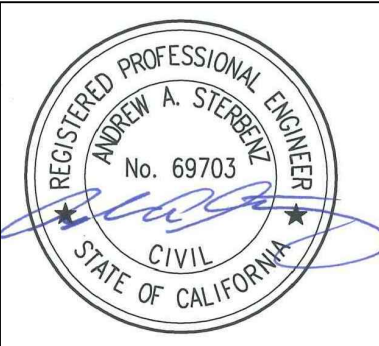


NO.	REVISION DESCRIPTION	DATE	APPR



MARINA COAST WATER DISTRICT
 11 RESERVATION ROAD
 MARINA, CA 93933
 (831) 384-6131

Schaaf & Wheeler
 CONSULTING CIVIL ENGINEERS
 3 QUAIL RUN CIRCLE, STE. 101
 SALINAS, CA 93907
 (831) 883-4848

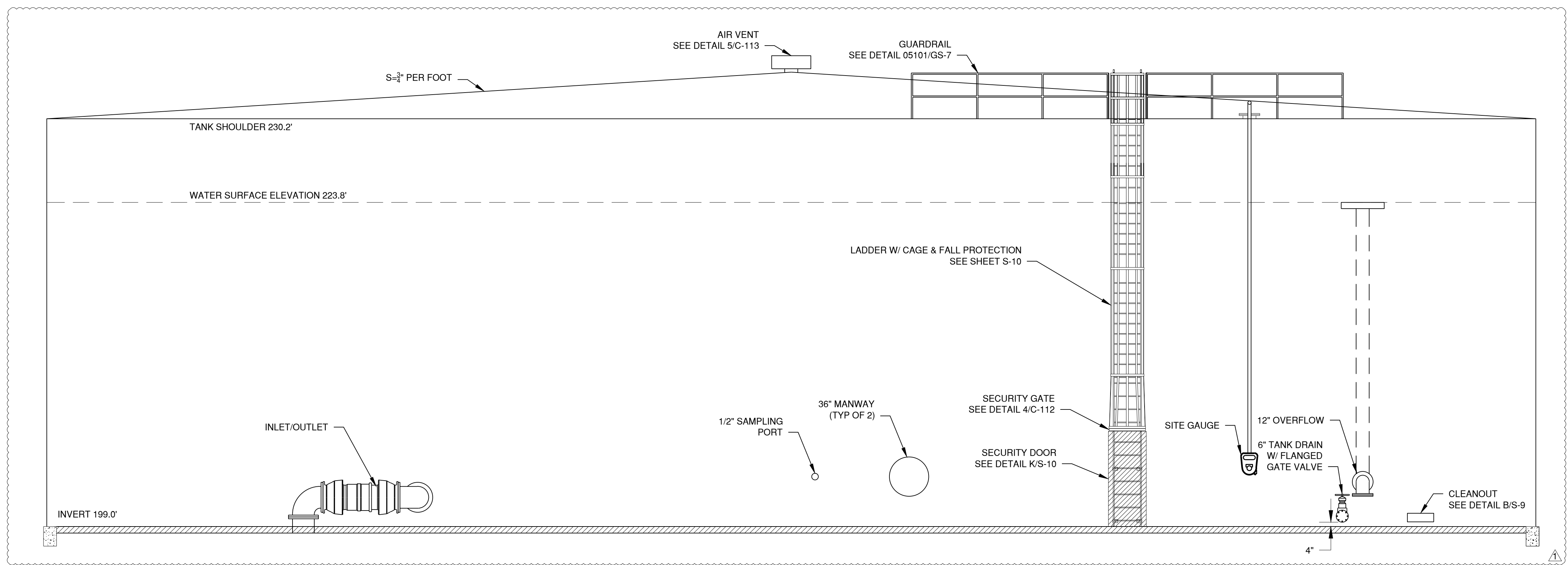


A1/A2 RESERVOIRS AND B/C BOOSTER PUMP STATION

TANK SITE PROFILE

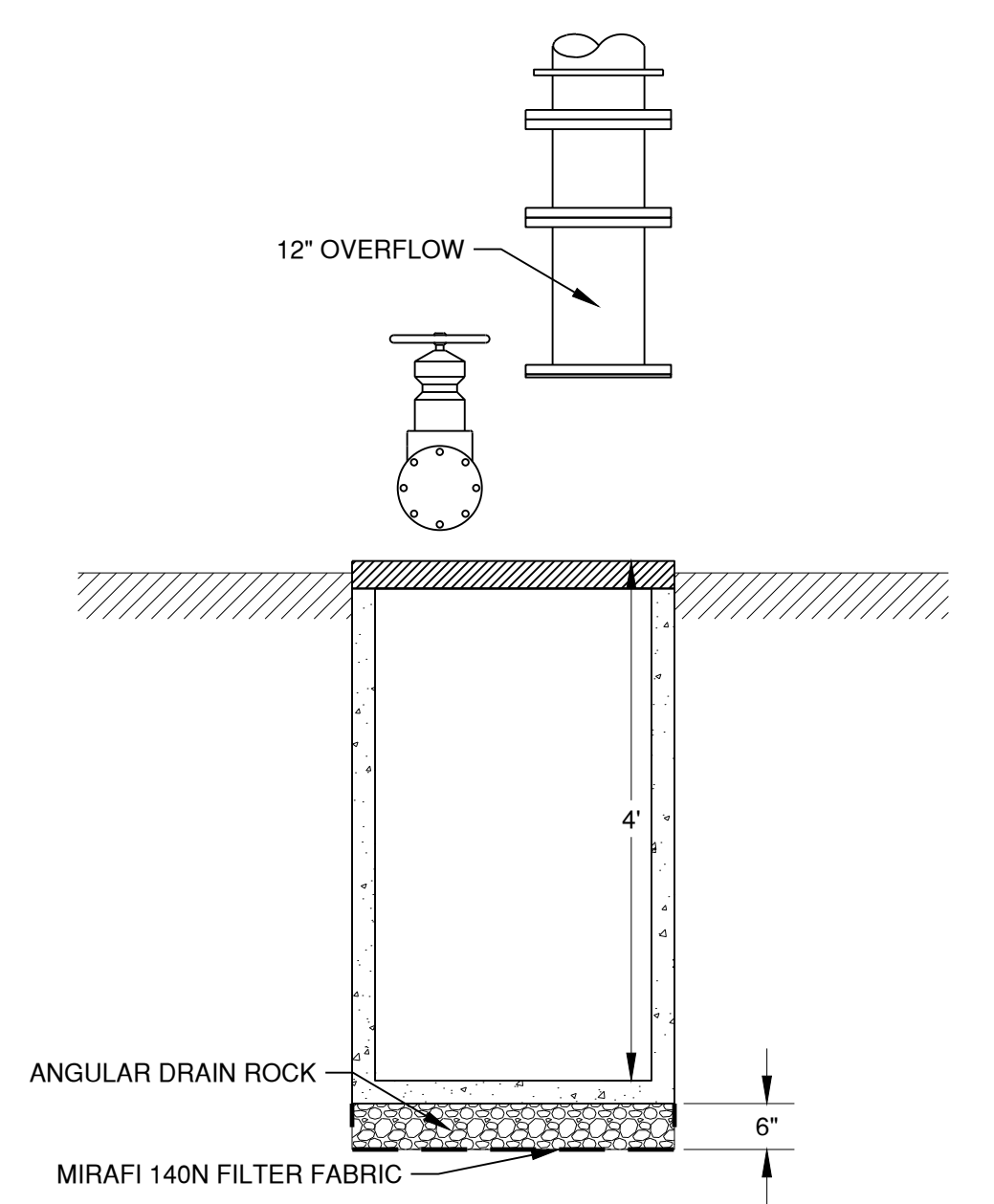
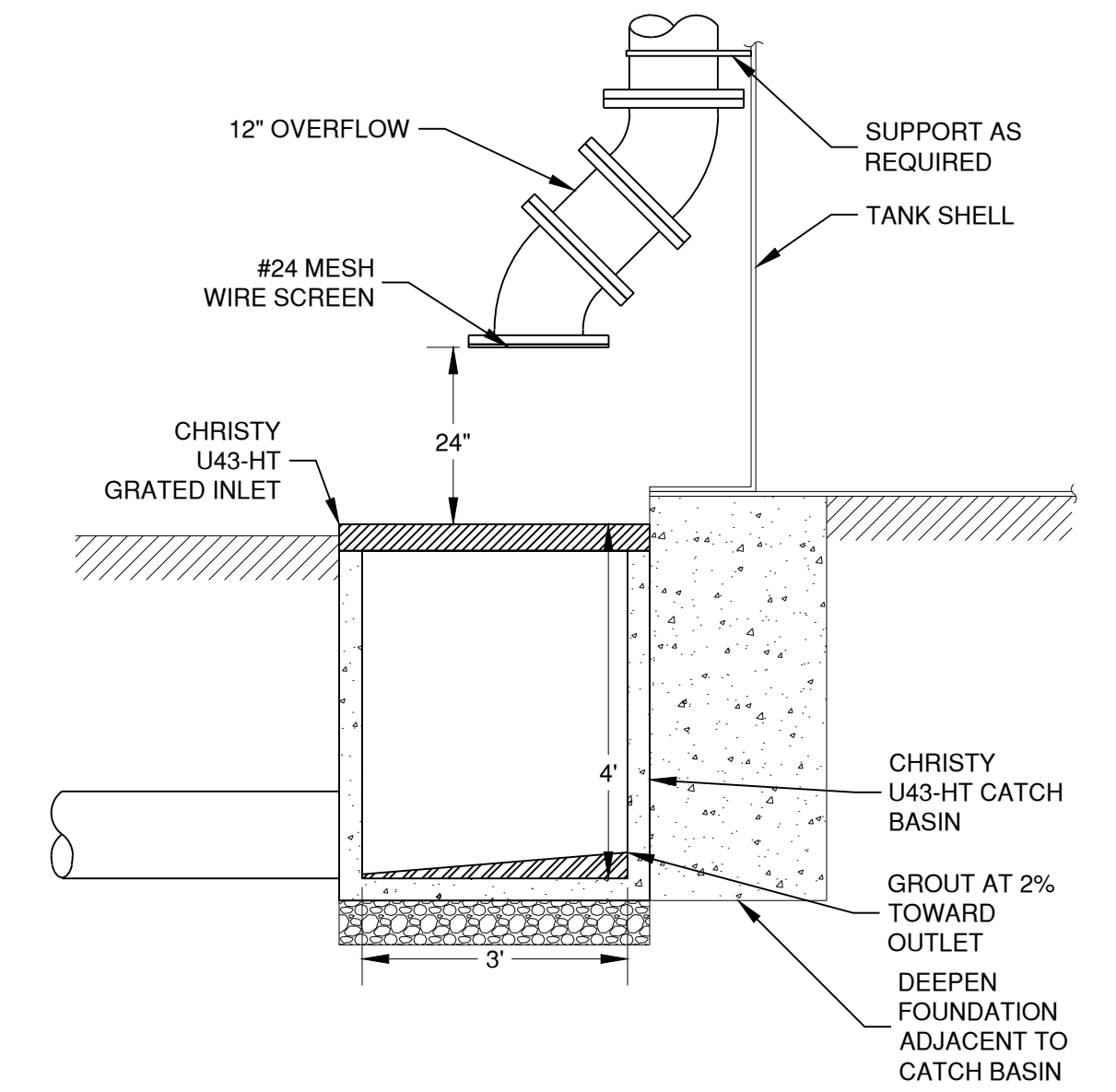
DATE:	12/23/20
SCALE:	AS SHOWN
DESIGN:	CJM
DRAWN:	CJM
CHECK:	AAS

SHEET
C-111
OF

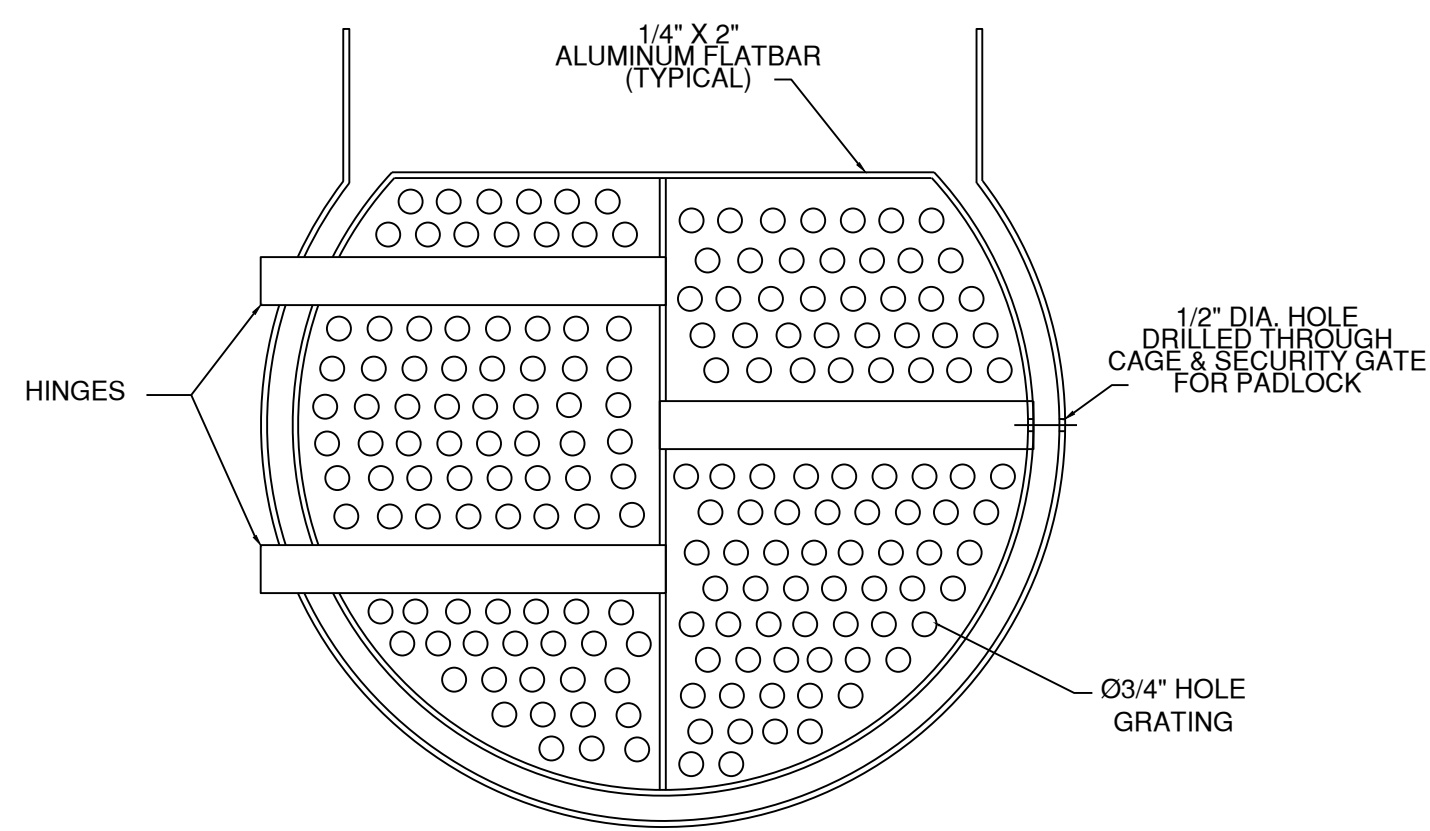


NOTES:
SEE 1/C-110 FOR LOCATIONS OF EACH TANK

TYPICAL TANK PROFILE A
C-110
1"=5'



OVERFLOW TERMINATION 3
NTS
C-110



SECURITY GATE 4
NTS
C-112

NO.	REVISION DESCRIPTION	DATE	APPR
1	REDUCED TANK HEIGHT	2/11/21	AAS



MARINA COAST WATER DISTRICT
11 RESERVATION ROAD
MARINA, CA 93933
(831) 384-6131

Schaaf & Wheeler
CONSULTING CIVIL ENGINEERS
3 QUAIL RUN CIRCLE, STE. 101
SALINAS, CA 93907
(831) 883-4848



A1/A2 RESERVOIRS AND B/C BOOSTER PUMP STATION

TANK DETAILS

DATE: 12/23/20
SCALE: AS SHOWN
DESIGN: MF
DRAWN: MF
CHECK: AAS

SHEET
C-112
OF